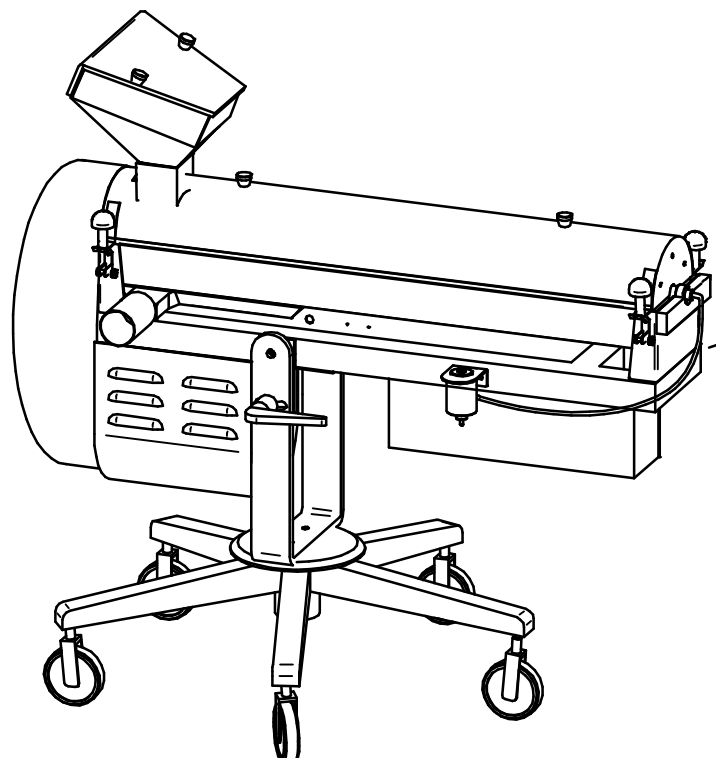
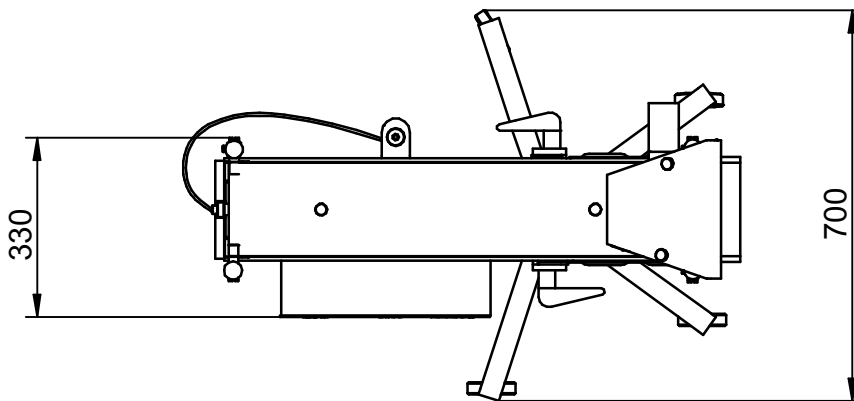
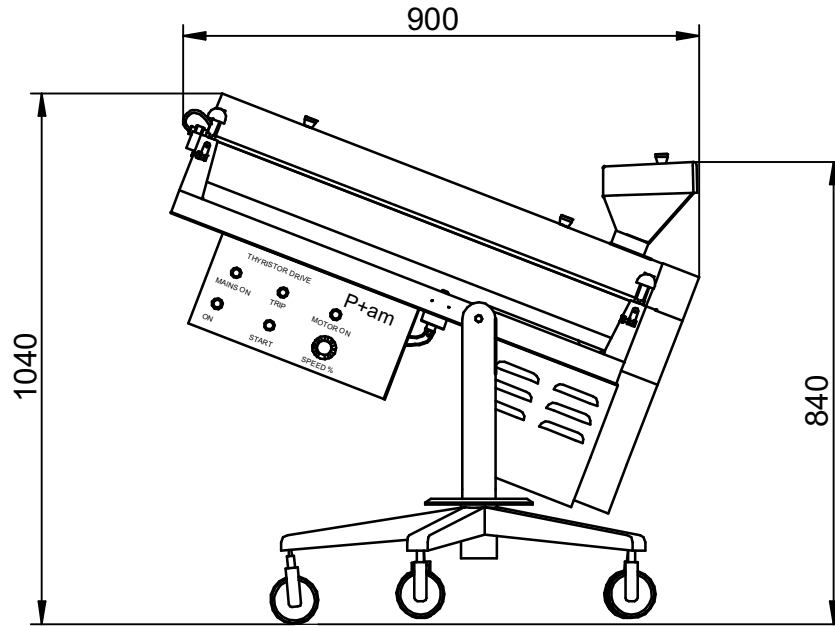
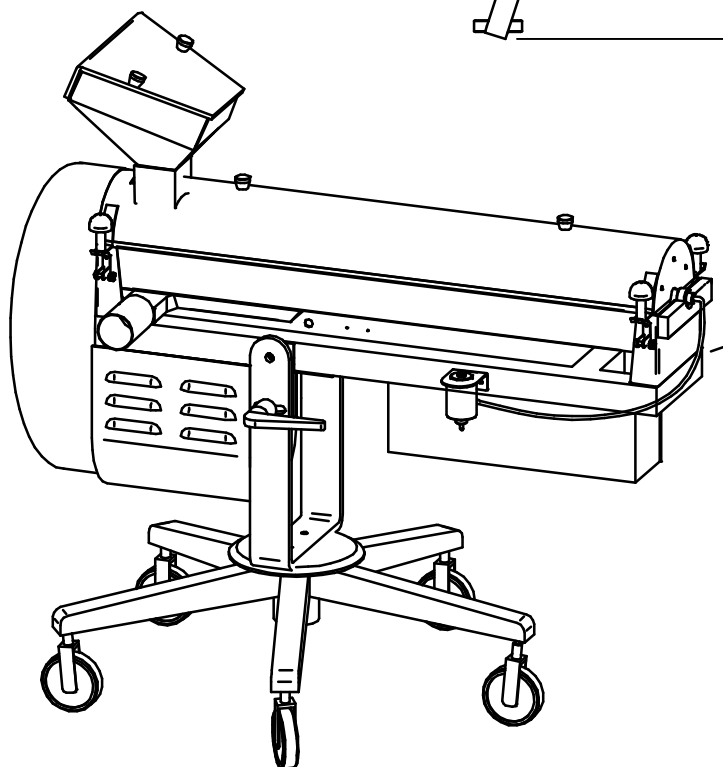
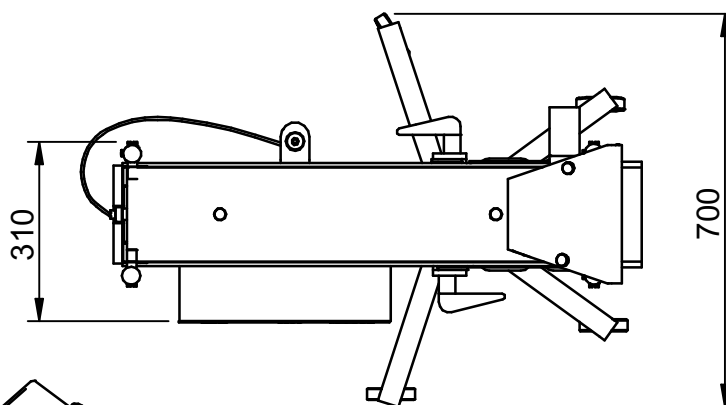
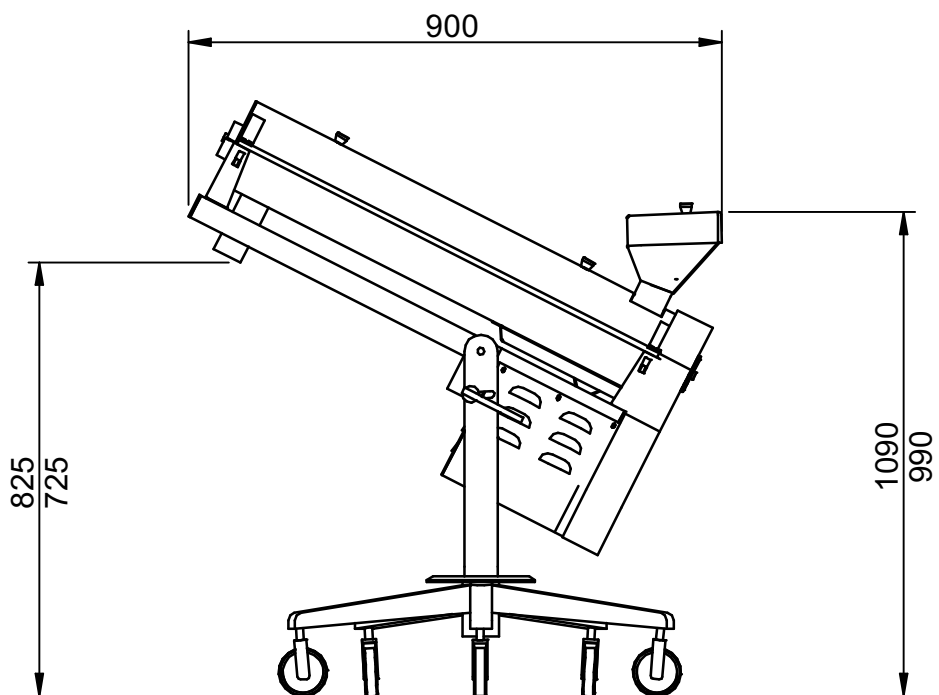
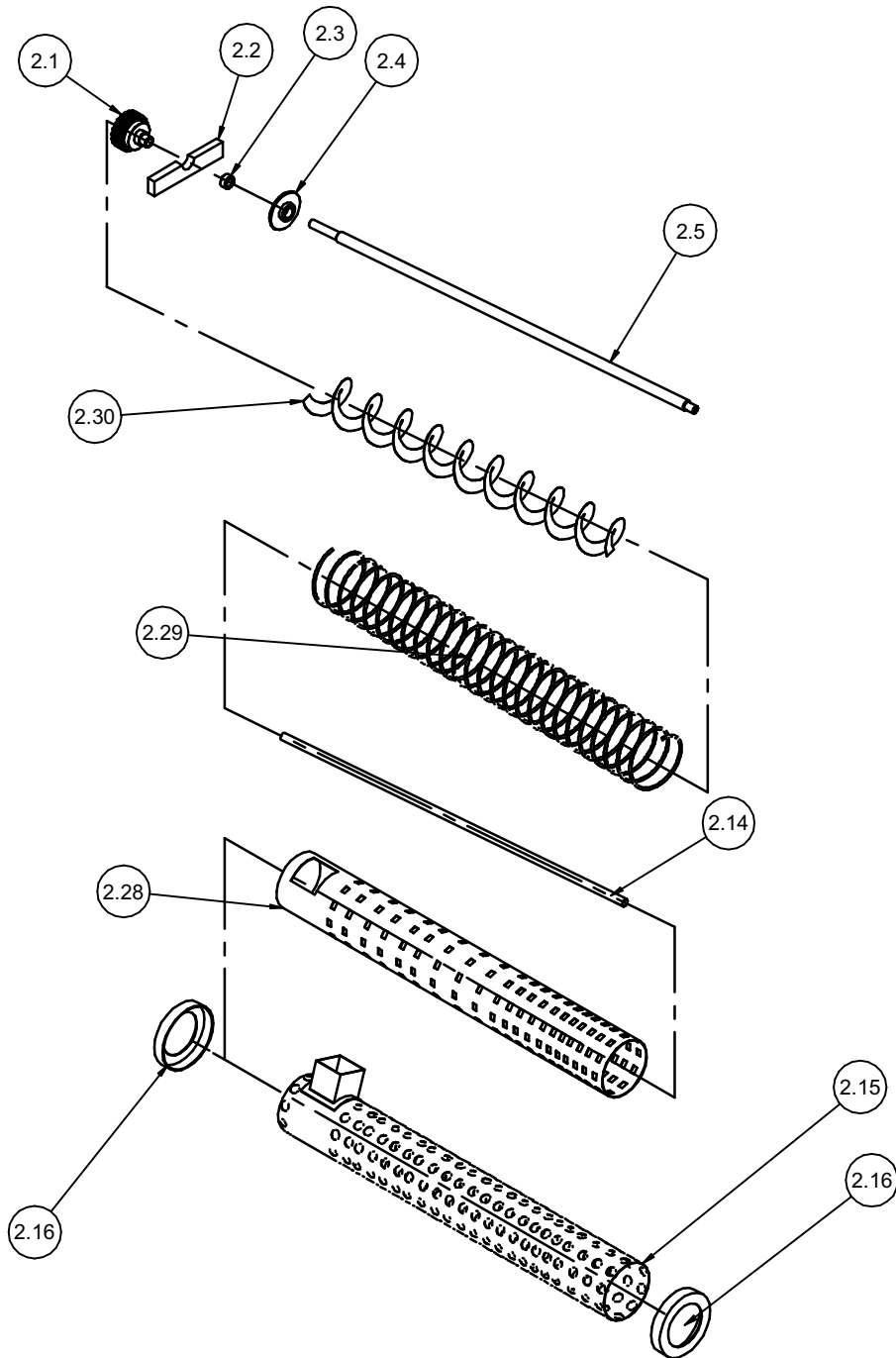


Placement Diagram
Line Machine

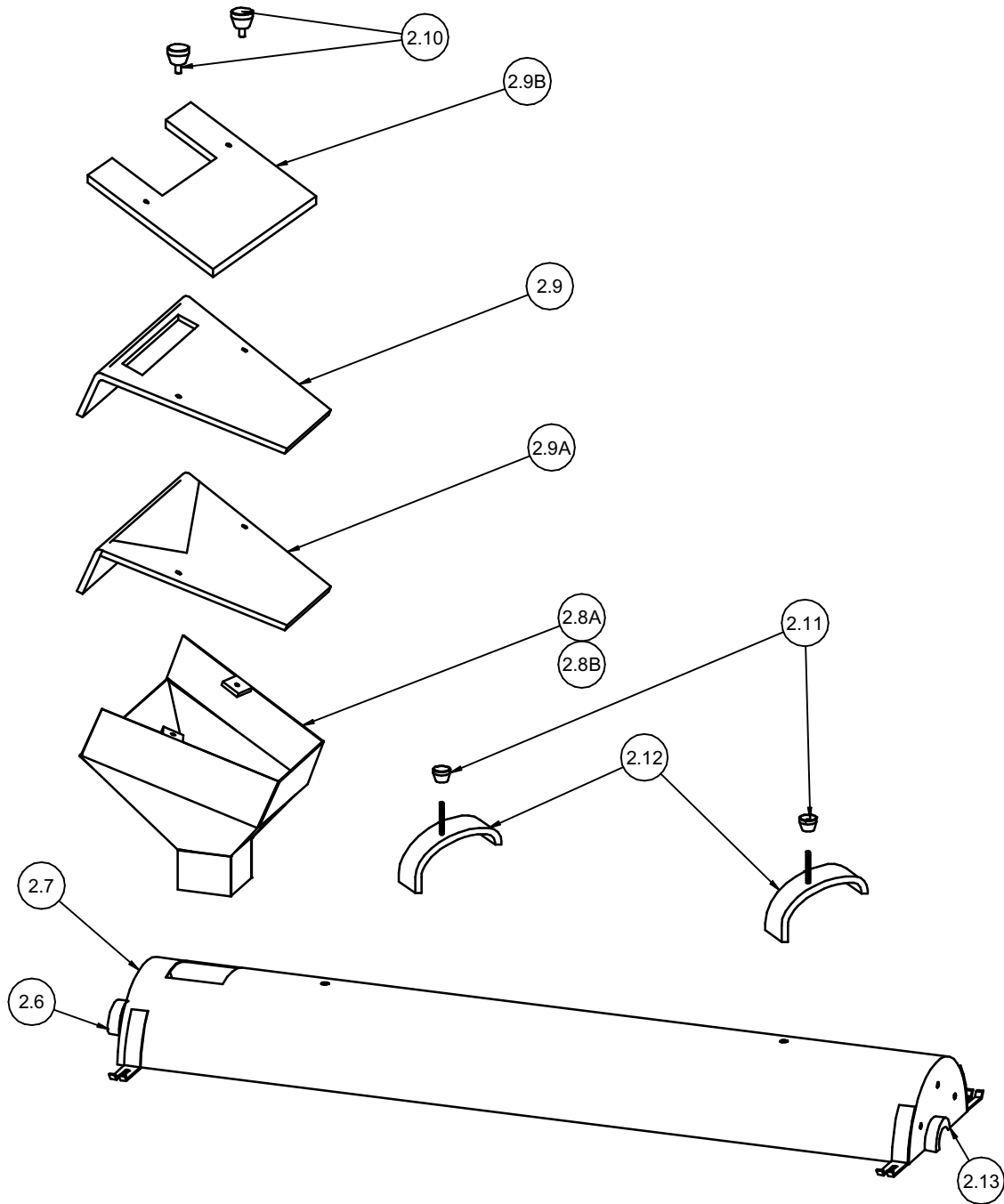


Placement Diagram
Stand Alone Model





SR.NO.	SAP PART NUMBER	DESCRIPTION	QTY	DRG/OLD NO.
2.1	W328800Z	TIMER PULLEY	1	328800114
2.2	W158800Z	SPLIT BEARING BLOCK	1	158800002
2.3	BMECBRGB0374	SRDG BALL BRG 6004-2R	2	GBB 052
2.4	W778941Z	LOCK	1	778941187
2.5	W478811Z	BRUSH SHAFT	1	478811187
2.14	W225000Z	HINGE PIN	1	225000220
2.15	W475221Z	PERFORATED TUBE	1	475221194
2.16	W108913Z	COVER	2	108913201
2.28	BMECMESH0021	NYLON NET	1	108929114
2.29	W128984Z	COMPRESSION SPRING	1	128984114
2.30	BMECBRSH0013	SPIRAL BRUSH	1	GTS 001

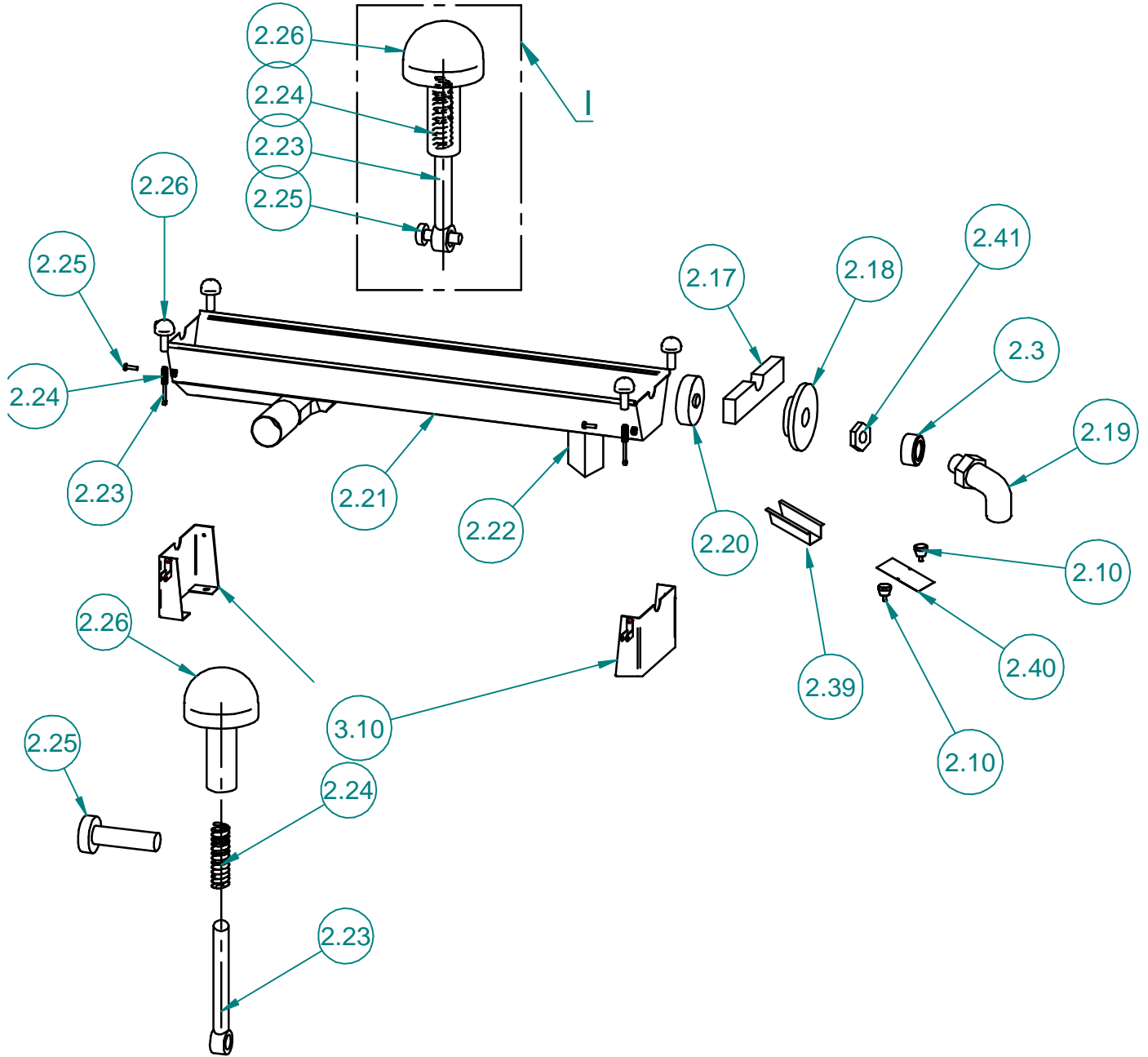


SR.NO.	SAP PART NUMBER	DESCRIPTION	QTY	DRG/OLD NO.
2.6	W208896Z	SPLIT BEARING SUPPORT	1	208896002
2.7	W138984Z	COVER	1	138984114
2.8A	W438969Z	INFEED HOPPER	1	438969120#
2.8B	W378953Z	INFEED HOPPER	1	378953120
2.9	W898995Z	COVER	1	898995001
2.9A	W438965Z	COVER	1	438965004
2.9B	W158955Z	COVER	1	158955116#
2.10	W138963Z	KNOB	2+2	138963120#
2.11	W374613Z	KNOB	2	374613114
2.12	W278924Z	CLAMP FOR PERFORATED TUBE	2	278924002
2.13	W155002Z	SPLIT BEARING SUPPORT	1	155002003

MARKED AS STAND ALONE ASSLY

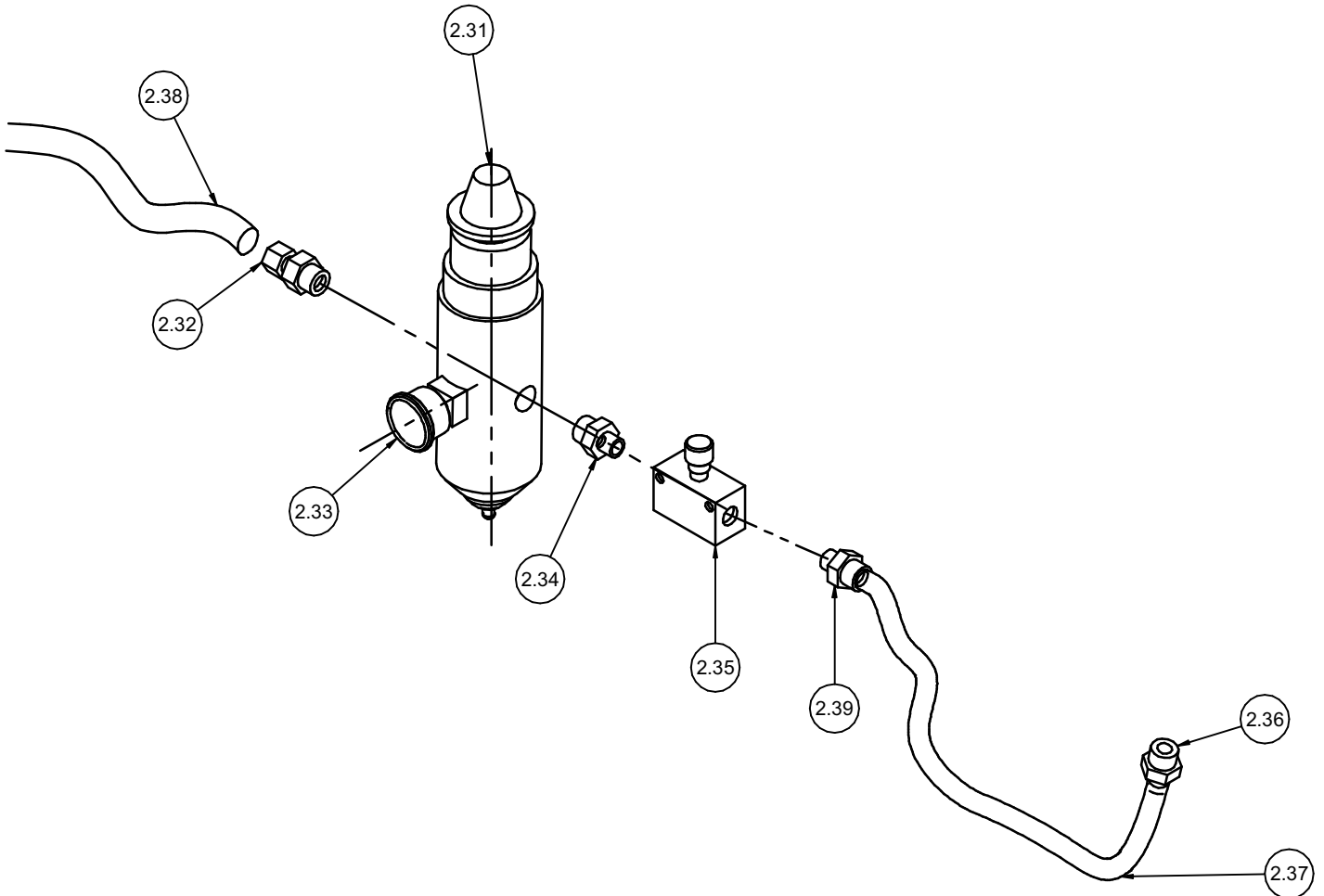
DP 100 DEDUSTING AND POLISHING MACHINE

Brush Assembly

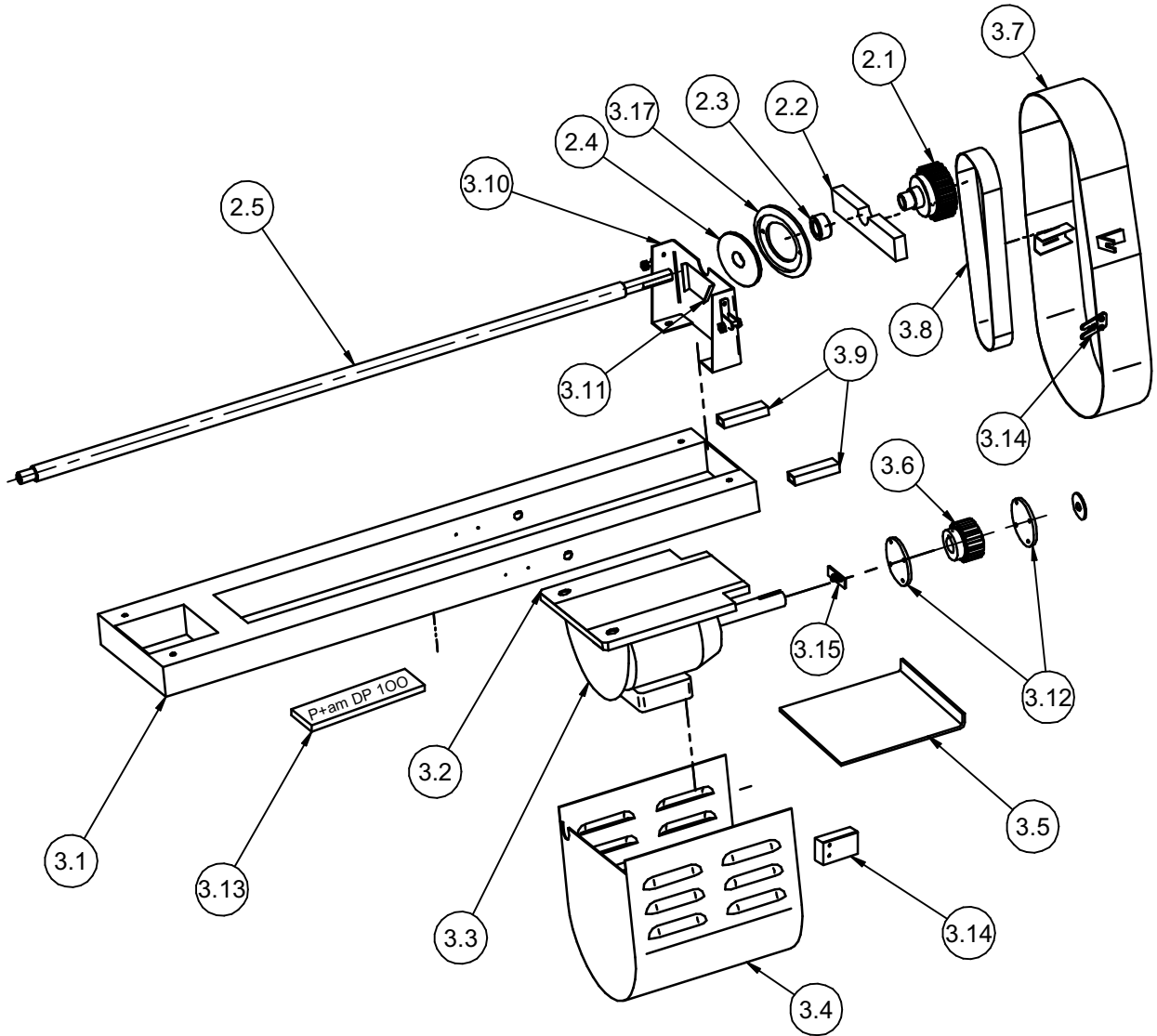


SR.NO.	PART NUMBER	DESCRIPTION	QTY	REMARKS
2.10	W138963Z	KNOB	4	138963120
2.17	W155003Z	SPLIT BEARING SUPPORT	1	155003002
2.18	W731618Z	NYLON SPACER	1	731618-001
2.19	BPNUCNCT0227	CONNECTOR ELBOW	1	
2.20	W475096Z	DELIVERY END LOCK	1	475096059
2.21	W208826Z	TROUGH	1	208826196
2.22	W475103Z	CHUTE	1	475103182
I	051122001	LOCK SUB ASSLY		Sold Only As Sub Assly
2.23	W138950Z	PIN	6	138950114 *
2.24	W138952Z	COMPRESSION SPRING	6	138952114 *
2.25	W228806Z	PIN	6	228806115 *
2.26	W138947Z	LOCK	6	138947114 *
2.39	W478813Z	CAPSULE CHUTE	1	478813182 #
2.40	W138959Z	ACRYLIC COVER	1	138959002 #
2.41	W255002Z	BUSH	1	
2.3	BMECBRG0374	SRDG BALL BRG 6004 - 2RSI	2	
3.10	W138956Z	SUPPORT	2	138956182

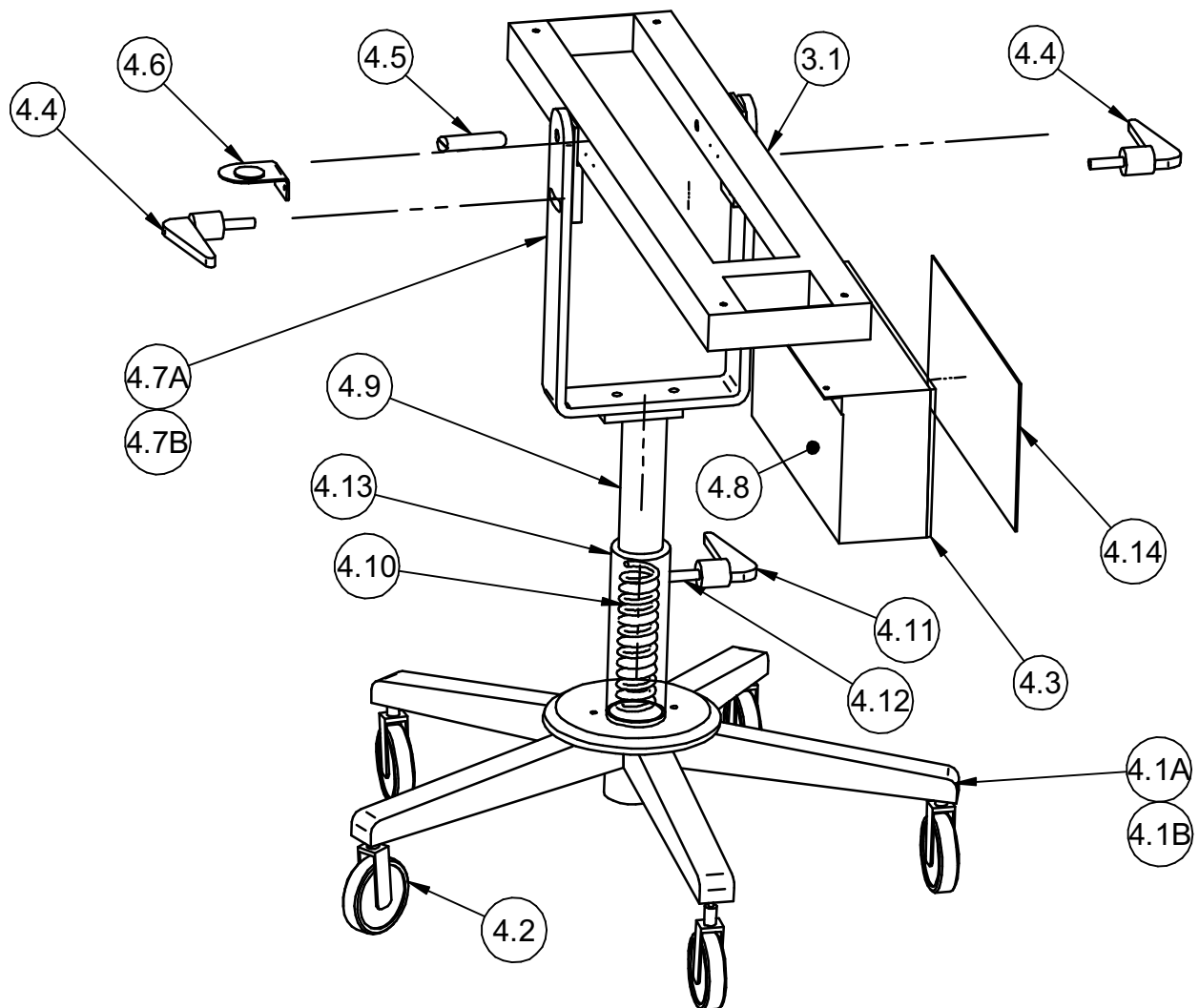
* SOLD AS SUB ASSEMBLY
STAND ALONE MODEL



SR.NO.	SAP PART NUMBER	DESCRIPTION	QTY	DRG/OLD NO.
2.31	BPNUFLTR0021	FILTER REGULATOR	1	
2.32	BPNUCNCT0190	MALE CONNECTOR QS-1/4-8	1	
2.33	BINSGAGE0015	DIAL GAUGE	1	
2.34	BMECNIPL0155	REDUCER BRASS 1/8" BSP X 1/4" BSP	1	
2.35	BPNUVALV0093	FLOW CONTROL VALVE 1/8" BSP	1	
2.36	BPNUCNCT0227	CONNECTOR QSRL-1/8-6(153411)	1	
2.37	BPNUTUBE0058	TUBE PLASTIC PUN 6X1	1	
2.38	BPNUTUBE0059	TUBE PLASTIC PUN 8X1.25	1	
2.39	BPNUCNCT0192	CONNECTOR MALE CK-1/8-6	1	



SR.NO.	SAP PART NUMBER	DESCRIPTION	QTY	DRG/OLD NO.
3.1	W478814Z	MAIN FRAME	1	478814203
3.2	W998903Z	BASE PLATE FOR MOTOR	1	998903201
3.3	BELEMOTR0015	MOTOR 0.25HP 1440RPM 415V/50HZ FT 6LEAD	1	-----
3.4	W478815Z	MOTOR COVER	1	478815116
3.5	W718801Z	COVER	1	718801211
3.6	W998904Z	TIMER PULLEY	1	998904201
3.7	W138957Z	DRIVE COVER	1	138957116
3.8	BMECBLTT0565	TIMER BELT - 68 T, 255 L - 0.75	1	-----
3.9	W475095Z	COVER	2	475095088
3.10	W138956Z	SUPPORT	2	138956182
3.11	W715003Z	TROUGH SUPPORT	2	715003195
3.12	W275002Z	FLANGE	2	275002059
3.13	W388984Z	PAM STICKER	1	388984002
3.14	BELESWTH0115	33036 ELF SAFETY SWITCH (FOR CE)	1	ESS104
2.1	W328800Z	TIMER PULLEY	1	328800114
2.2	W158800Z	SPLIT BEARING BLOCK	1	158800002
2.3	BMECBRGB0374	SDRG BALL BRG 6004 - 2RSR	2	
2.4	W778941Z	LOCK	1	778941187
2.5	W478811Z	BRUSH SHAFT	1	478811187
3.15	W475096Z	L.H. SIDE ARROW STICKER (FOR CE)	1	
3.17	W731619Z	COVER (FOR LOCK)	1	731619213



SR NO.	SAP PART NUMBER	DESCRIPTION	QTY	DRG/OLD NO.
4.1A	W348969Z	STAND	1	348969120
4.1B	W478819Z	STAND (FOR STAND ALONE DP)	1	478819114 #
4.2	BMECWHCT0008	CASTOR WHEEL WITH BRAKE	5	GFC020
4.3	BELEPANEL0132	ELECTRICAL PANEL	1	478826180
4.4	W478830Z	LOCKING LEVER	2	478830116
4.5	W228805Z	HINGE PIN	2	228805114
4.6	W178802Z	BRACKET FOR FRL	1	178802195
4.7A	W348958Z	BRACKET	1	348958120
4.7B	W168981Z	BRACKET(FOR STAND ALONE DP)	1	168981116#
4.8	BELEDRIV0206	DRIVE ATV12H037M2 0.5 hp SE	1	BELEDRIV0035 *
4.9	W168974Z	SHAFT (FOR STAND ALONE DP)	1	168974116 #
4.10	W168975Z	COMPRESSION SPRING (FOR STAND ALONE DP)	1	168975120 #
4.11	W418810Z	LOCKING LEVER (FOR STAND ALONE DP)	1	418810116 #
4.13	W168976Z	GUIDE TUBE (FOR STAND ALONE DP)	1	168976120#
4.14	W168903Z	LEGEND PLATE	1	168903002
3.1	W478814Z	MAIN FRAME	1	478814203