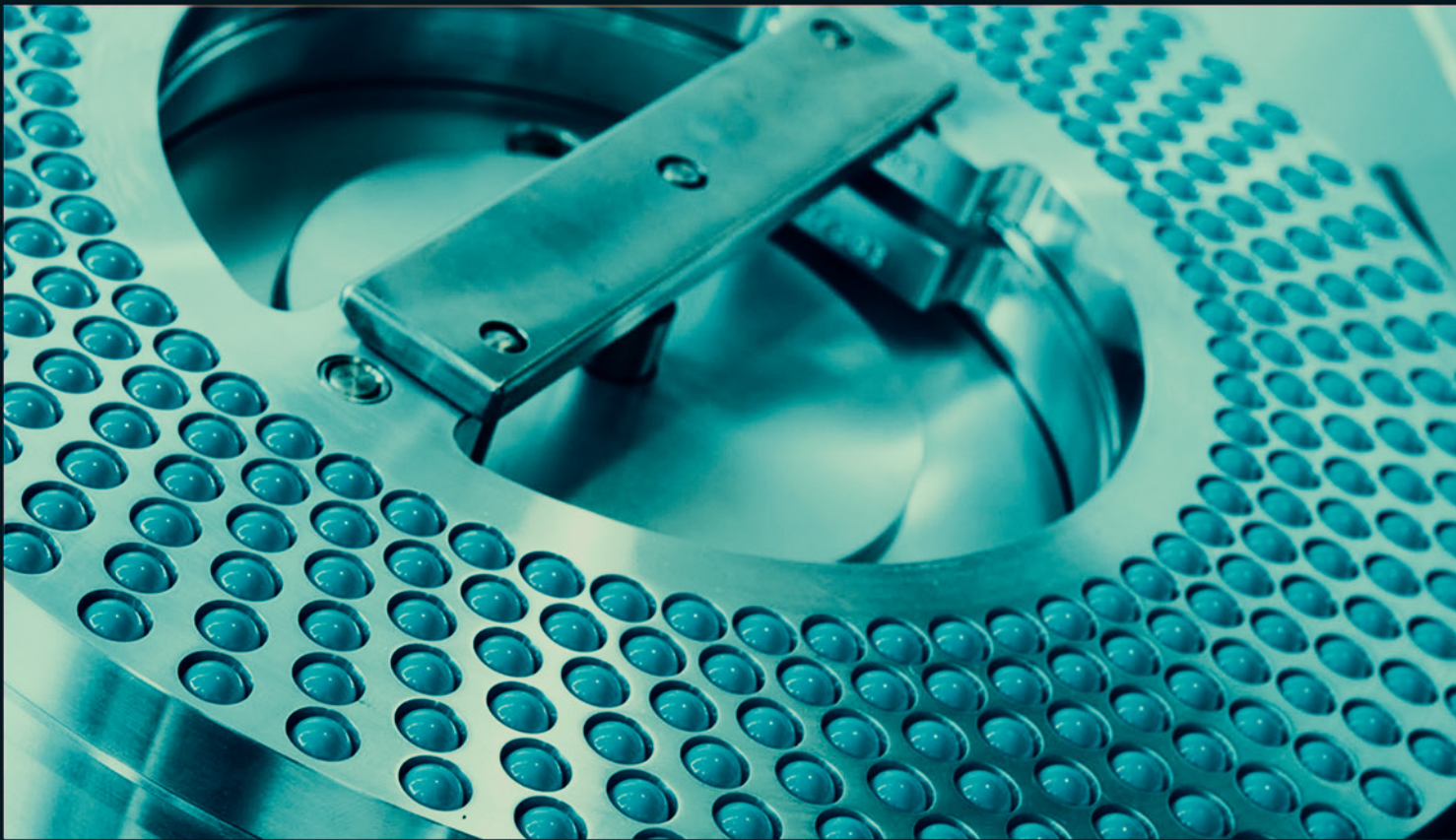


**Lonza Engine™**  
*Accelerate Innovation*

---

## **Ultra III™**

Capsule Filling  
Machine



**Lonza**

## Our offer

- cGMP-compliant and semi-automatic capsule filling machine
- Enables to streamline your production process and facilitate speed to market

## Features and Benefits

### Enables programming for specific formulations

Human Machine Interface (HMI) Touch screen

### Powder can be recuperated during production

Stainless steel tabletop

### cGMP-compliant

#### Ensure cleanliness and protect product integrity

Stainless steel ring carrier, rotary table, powder hopper and table top

Removable powder hopper for cleaning

Large recovery station

### Allow customization to enhance efficiency and reduce operator fatigue

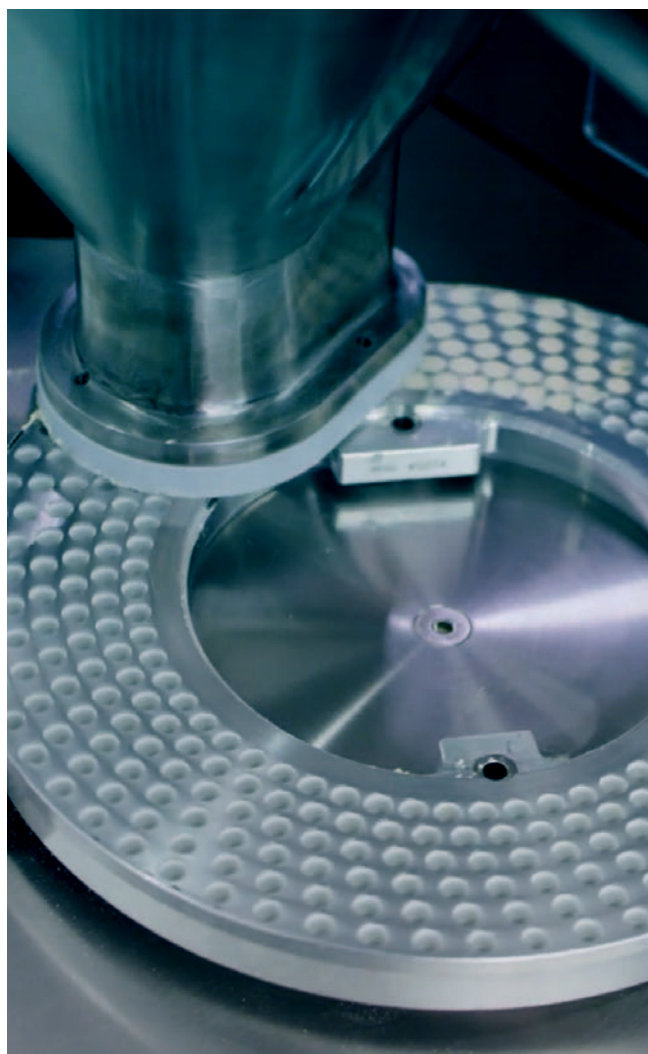
Optional features:

Automatic hopper swing, Automatic ring spinner, Capsule de-duster chute, Vacuum pump

### Support your production performance optimization and develop machine-specific action plans

Technical service team

A full range of Ultra III™ accessories, parts and spares are available upon request.



## GMP & Safety

### The Ultra III™s highly advanced technology and components ensure cleanliness and protect product integrity.

- Stainless steel ring carrier, rotary table, powder hopper, and table top
- Digital displays on touch screen enable highly repeatable and consistent speed and timer settings
- Removable powder hopper for cleaning
- Large recovery station

### The unique safety features of the Ultra III™ protect operators and mechanics in the encapsulation process.

- No pinch points in closing station
- Safety interlocks on rectifier
- Access panels
- Pneumatic closing station for integration of capsule finishing equipment
- Guards and proximity switch on closing station
- Rectifier guard interlocks
- Hopper Detection Safety Switch
- CE Approved

*\* Rates depend on operator's skill level and density and type of material being filled*

*AAA\*\*, AA\*\*, AAel\*\*, A, B, and C: Contact Capsugel®'s Technical Support Group for details*

*\*\* Conversation kit required*

## Specifications

### PRODUCTION CAPACITY\*

Capsule Size	Speed per hour
--------------	----------------

5	16,000 – 28,000
---	-----------------

4 - 3	21,000 – 33,000
-------	-----------------

2 - 1	21,000 – 28,000
-------	-----------------

0 - 0e1	16,000 – 24,000
---------	-----------------

00 - 00e1**	9,000 – 16,000
-------------	----------------

000**	4,500 – 8,000
-------	---------------

### Size Dimensions

152cm x 89cm x 191cm high

### Weight

610kg (1,345 lbs)

### Electrical Power Requirements

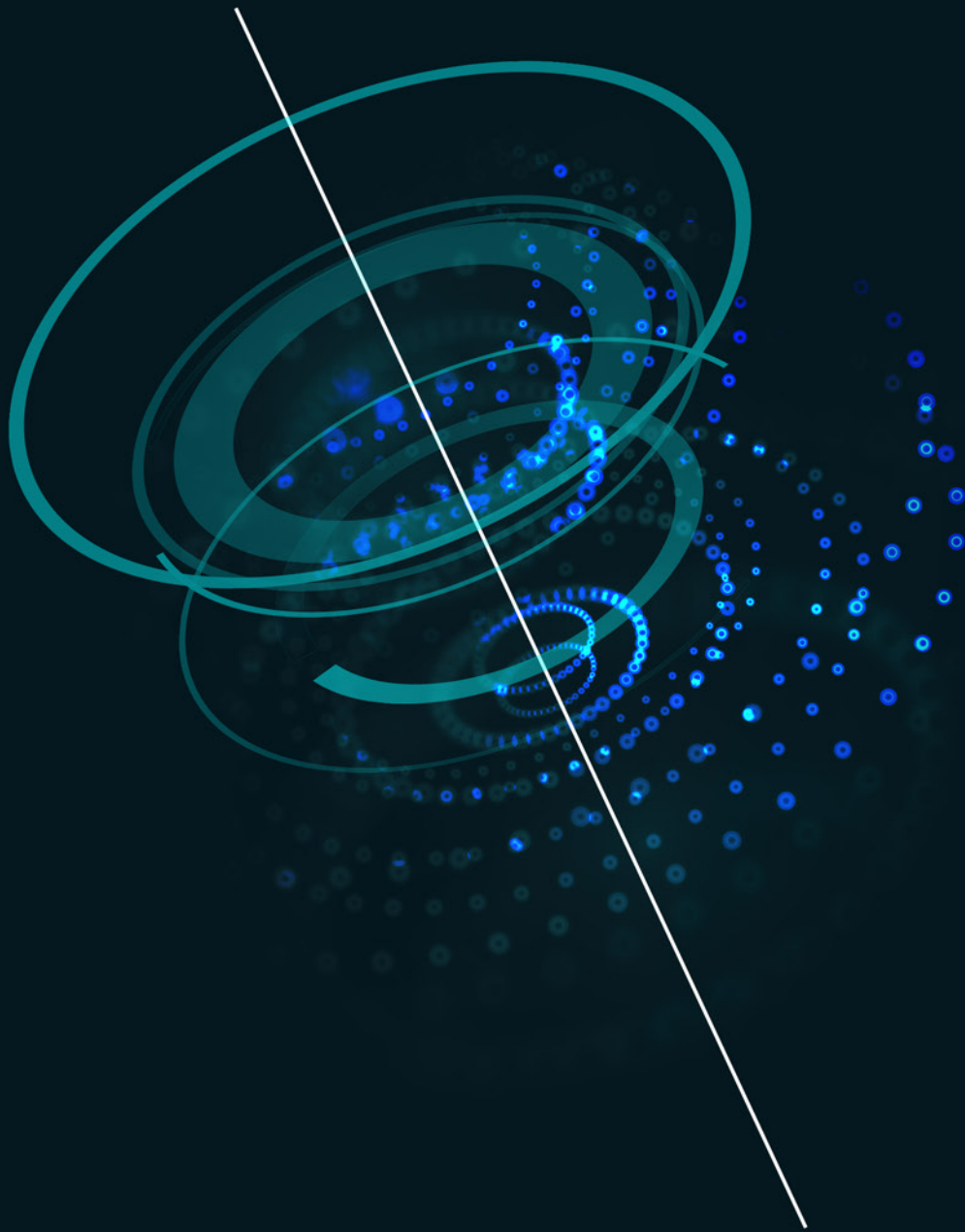
(208 – 230 Volts, 3 Phase, 50/60 Hz on 20 amp service, Wye or Delta Power)

### Other

All orders include choice of auger (Spade, One-Way, Two-Way, or Three-Way)







# Lonza

---

To order now or to obtain more information  
about the equipment:  
Visit: [www.capsugel.com](http://www.capsugel.com)  
EMEA: [solutions.emea@lonza.com](mailto:solutions.emea@lonza.com) /  
+33 389 205725  
AMER: [solutions@lonza.com](mailto:solutions@lonza.com) / 800 845 6973  
Or contact your Lonza representative

All product information corresponds to Lonza's  
knowledge on the subject on the date of publication,  
but Lonza makes no warranty of any sort, including  
with regard to its accuracy or completeness and  
Lonza assumes no obligation whatsoever, including  
any obligation to update it. All trademarks belong to  
Lonza or its affiliates.  
©2019

**CDS201910001-D**