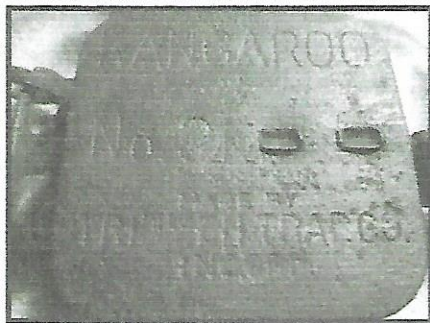
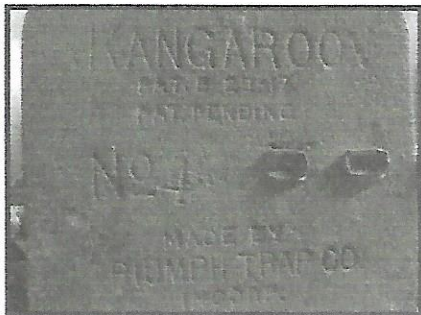


Unique Triumph Stamps

I was recently talking to a NATCA member about Master Grip 34Xs. He said he was considering buying one but did not because it had a hand stamped X on it. I was somewhat surprised by his comment as all the 34Xs that I have seen have had hand stamped Xs.

Hand and unique stamping is probably one of the more interesting parts of the Triumph Trap Company history. Triumph was competing with Oneida Community and did what ever they could to produce traps and get them out the door for sale. Because of this, they did not wait for new stamps to be created if they broke or may not have even had stamps for some. If they ran out of pans of a certain size, they just stamped the correct number over the number on the pan and went ahead with production. In some cases, they used pans from different traps. Shown is a 31 Kangaroo pan with a hand stamped X. The very unique part of this pan is that it is on a 3XX Easy Set.

Photos - 3 stamped over 4 long-spring, 4 stamped over 3 Kangaroo, 31X with hand stamped X on 3XX Easy Set



The traps I have seen with only hand stamped Xs are 42X, 4X and 34X. Many other traps that have Xs have both a machined X and a hand stamped X variation. The hand stamped Xs even had variations as some had end caps and others did not. And because of the human component of stamping on the pan, the Xs are never in the same place.

Photos - 34X without end caps, 42X with end caps



over with Triumph. There were even different sized Triumph stamps - one with thick letters and one with thin letters. In some cases, the word was obliterated or just ground off without it being restamped.

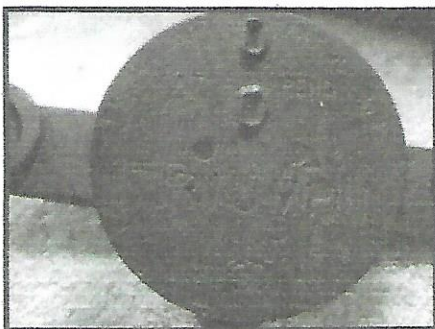
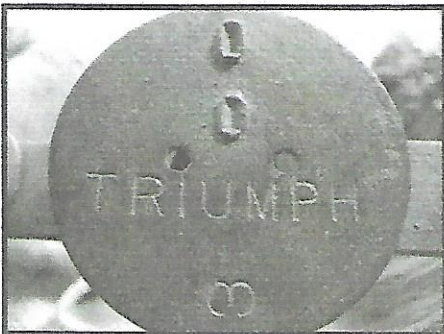
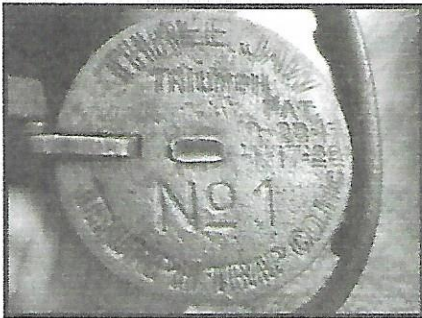
Photos - Oneida Game Trap Company before over stamping, Thick Triumph overstamp, Thin Triumph overstamp



Another part of Triumph's history leading to unique stamping is the court case they had with Oneida Community for the use of the word Oneida on their traps when Triumph was called the Oneida Game Trap Company. This resulted in traps originally being stamped as Oneida Game Trap Company having the word Oneida stamped

One of my favorite unique stamps is double stamping. Usually double stamping occurs with the same stamp being imprinted on the same pan twice. A very unique stamp is when a trap pan is double stamped with different stamps.

Photos – Double stamped 1XK, Double stamped Three Jaw, Two Different Stamps, One of the stamps, One of the stamps 2



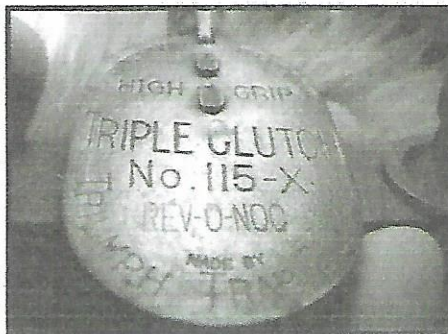
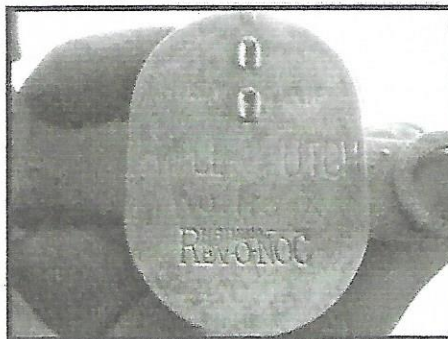
The most famous Triumph hand stamping is the 2A which resulted from a loss in another Court case. This time to Gibbs. This involved the Triumph Three Jaw and the Gibbs Two Trigger. Because of this loss, Triumph had many open coil powered long springs which could not be used. They put the springs on a 2 with Triple Clutch jaws and hand stamped an A behind the 2.

Photos – 2A



And of course, there are REV-O-NOC stamped traps put out by HSB&Co in partnership with Triumph. There was even a variation here with one stamp being angled with HSB&Co included over the REV-O-NOC part and the other stamp being just a plain block REV-O-NOC.

Photos – Angled REV-O-NOC, Block REV-O-NO



I encourage members who have information contrary to what I have discussed above to send me an email or respond in the magazine. I also encourage members to share photos of their uniquely stamped traps with me via email or everyone in the magazine.

Scot H. Dahms
 2270 W Willow Lane
 Peru, Indiana 46970
ranger1971@comcast.net
 765-327-1531

Space filler with items related to Triumph. TP

Tag Prices	
Remittance Must Accompany Order No C. O. D. Shipments	
100 Tags -	\$2 00
75 Tags -	1 75
65 Tags -	1 50
50 Tags -	1 25
40 Tags -	1 00
25 Tags -	75
15 Tags -	50

Orders Cannot be Accepted for Less Than 15 Tags

The metal tags which we furnish have rounded ends. Ground perfectly and the wire. We supply the copper wire for attaching to traps. All shipped prepaid to your address.

Quick shipments if you order early

Triumph Trap Company, Inc.
 Goshute New York

Below are three different 3 1/4" x 6" envelopes used by Triumph Trap Co. to send small parts, trap tags, etc. to the trapper.

