

Thermocore Standard Features:

- ▶ 4"-thick R-24 wall panel accepts standard window jambs
- ▶ 6-1/2" R-40 wall panels; 6-1/2" R-40 roof panels; 8-1/4" R-50 roof panels
- ▶ Highest R value per-inch in the industry
- ▶ Panels up to 8 ft. x 24 ft.
- ▶ Class 1 rated foam—highest fire rating given to a residential product
- ▶ Waste-free manufacturing process
- ▶ Waste-free on site
- ▶ All door and window openings in place
- ▶ All door and window bucks in place
- ▶ Electrical boxes and conduit in panels to precisely match your plans
- ▶ All sill and top plates included
- ▶ All spline material included

Thermocore Physical Properties:

- ▶ **Insulation Core:** 3-1/8", 5-9/16" wall and 5-9/16", 7-1/4" roof polyurethane, 2.2 lb. density, Class 1, closed-cell foam. Contains no formaldehyde or CFCs.
- ▶ **Outer/Inner Skin:** 7/16" oriented strand board. All OSB is exterior rated and is APA/Teco rated for structural use.
- ▶ **Adhesion:** Injected foam expanding into the two skins under pressure ensures a superior bond, making these composite panels some of the industry's strongest.
- ▶ **Overall Thickness:** Wall: 4", 6-7/16" +/- 1/8"
Roof: 6-7/16", 8-1/4" +/- 1/8"
- ▶ **Minimum R Value:** Wall: R-24, R-40 Roof: R-40, R-50
- ▶ **Structural Properties of Foam**
Comprehensive Strength—26psi; Tensile Strength—18psi;
Shear Strength/Modulus—22/300psi; Porosity—95%
- ▶ **Fire Safety:** Foam Fire Rating—Class1; Flame Spread—20 (ASTM E-84); Smoke Developed—300 (ASTM E-84); Structural Integrity in Fire—Polyurethane foam is a thermoset plastic which does not melt. It maintains structural integrity until consumed.
- ▶ **Warranty:** Thermocore™ panels come with a limited lifetime warranty covering defects in materials and workmanship. For complete warranty, contact the company.



What others are saying:

"Thermocore's unique manufacturing process is waste-free at the plant and at the job site. This was important to us along with their higher R-value. This was a highly technical job and Thermocore was able to give us details that other panel systems could not."

—Van Der Ryn Architects, CA.

"My house is 1-1/2 times larger than my neighbor's house yet my utility bills are half what his are."

—Dave K., IN.

"My panels are free. With the energy savings I am realizing, my panels are the only product in my new house that pays for itself."

—William D., OH.

"Thermocore's 4-inch-thick panel is worth its weight in gold. We were going to pay \$3,500 for window jamb extensions with all the other panel systems. Thermocore offered the best of both worlds—the highest R-value and the ability to use standard window jambs."

—Gus K., VT.

For the complete Thermocore story—
including product comparisons, cost worksheets,
project photos, and warranty information—
visit www.thermocore.com.

Thermocore

Structural Insulated Panel Systems



Build with
environmental
responsibility

Keep your
home warm
in winter

Keep your
home cool
in summer



Thermocore™ Panel Systems

*The world's most energy
efficient way to build*



Discover the many environmental advantages of building with Thermocore panels.

Across the country, builders and homeowners are combining low construction and energy costs with stunningly beautiful home designs thanks to Thermocore building products.

Thermocore has revolutionized the structural panel industry. We were the first to develop 4"-thick structural insulated panels—allowing the use of standard window and door jams without extensions. All of our pre-configured, pre-engineered panels are cut with CNC machining, ensuring an exact match to your specifications, and checked for thermal efficiency with our thermal imaging Insulation Verification System (IVS), another industry first.

Look over the many benefits our panels offer in savings, efficiency and environmental sensitivity. We believe you'll agree, the Thermocore Panel System is the smart choice for your new home.



Patrick Egan
President
Thermocore Panel Systems

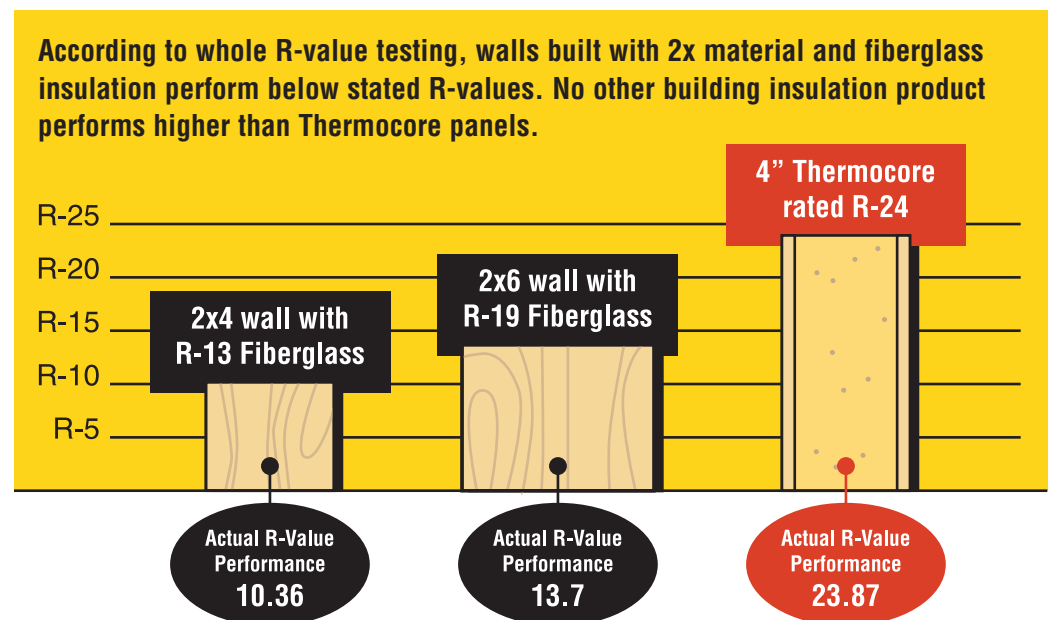


Thermocore's energy savings have been recognized by the EPA's Energy Star program.

Thermocore™ panels give you the beauty of a traditional home while maximizing energy efficiency and quality of living.

Unsurpassed Energy Savings

Thermocore insulated wall and roof systems offer the **highest R-value** per inch of any building product available. In fact Thermocore offers nearly twice the R-value of a conventionally built wall of the same thickness. That's a difference you will feel each time you walk through the door and that puts money in your pocket every month!



Draft-free Construction

Thermocore Thermopanel's unique composite construction and joinery makes for a draft-free building envelope. Industry tests show that Thermocore wall systems perform **over 60% better** than conventional stick-built homes.

Secure Living

Thermocore's unique foam core has a Class 1 fire rating, will not melt and eliminates fire chases in your exterior walls. And the closed cell foam core will not support mold growth. Now that's security!

The industry's highest environmental sensitivity

Lowering your home's energy consumption will help reduce greenhouse gas and have a positive effect on the environment. Thermocore's unique manufacturing process also eliminates much of the waste created in framing your new home, freeing up valuable landfill space. Thermocore Panels—good for you and good for the environment!

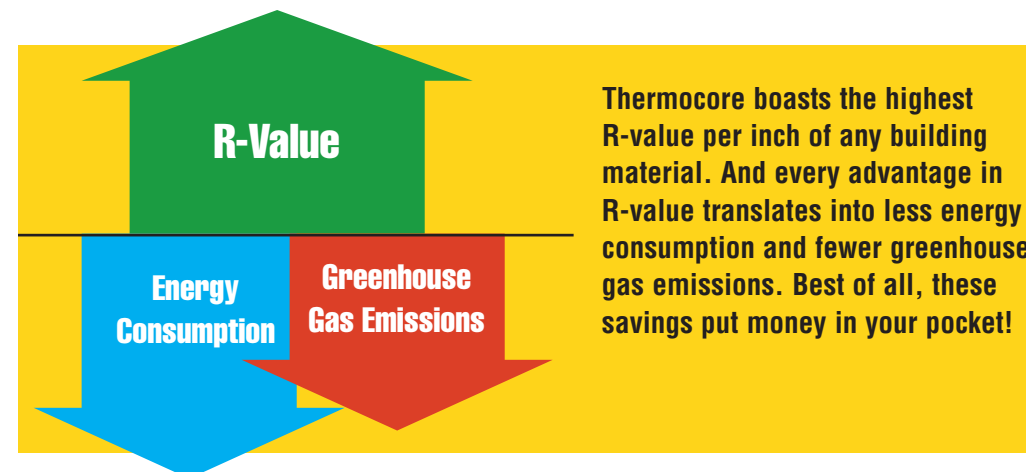
Thermocore™ Panel Systems— The environmentally smart decision.

A Dime Buys a Dollar

For about 10% more than the cost of framing and insulating your walls, Thermocore delivers 100% more insulating muscle. Think of it as "super-sizing" your insulation which leads to super-sized savings. While it's often a cliché, a Thermocore Panel System **will** actually pay for itself—we guarantee it!

Enhance Your Investment

A home is an investment and using Thermocore insulated Panels strengthens your investment. The Thermocore Panel System reduces the financial demands of heating and cooling your home, allowing you to put more money in your pocket every month. You also automatically qualify for federal *Energy Star* tax credits*—by using the Thermocore building system, the savings just keep adding up!



Walls built with fiberglass insulation can perform 20-30% below stated R-value

Due to thermal breaks and shorts in conventionally built walls, R-values can fall well short of expectations.

| Air Infiltration | 2 x 4 wall ¹ | Thermocore wall ² |
|-------------------------------|-------------------------|------------------------------|
| Air Exchanges | 5 | .95 (81% better) |
| Airflow at 50 pascals | 1,500 | 350 (77% better) |
| Natural Air Infiltration Rate | .35 | .06 (83% better) |

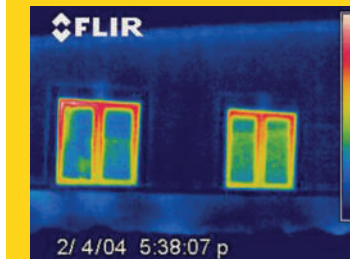
Lower numbers mean better performance and increased savings!

¹ Based on Pennsylvania housing research data ² Actual Thermocore test data on 1,400 sq. ft. house

Amazing energy savings

Visit www.thermocore.com to see Thermocore homes that tested with a **65% reduction in energy consumption** over the standard new home rating on the HERS® Index.

*Information on the tax credits can be found at www.energystar.gov



Built with Thermopanel



Stick-built

Infrared images taken at night, with an outside temperature of 24° F, clearly reveal the tremendous heat loss in a home built with 2x studs and conventional insulation (bottom). The top photo shows a home built with Thermocore 4" R-24 wall panels which utilize polyurethane foam and do not contain energy robbing 2x studs. This combination eliminates the heat transfer found in traditional stick frame walls. These photos demonstrate the true performance of Thermocore vs. conventionally built homes.

Building with Thermocore® Panel Systems is the single most energy efficient way to build your home.



www.thermocore.com