

Publication No. 14560051A

## LM-600Analog Rev 2 - Voice Record Modification

Due to the 2021 worldwide shortage of microcontrollers, a replacement part has been used on the LM-600Analog Rev 2 which has a minor effect on the Voice Record capability. The replacement microcontroller cannot simultaneously record and play received audio due to 16K RAM instead of 32K RAM, therefore, received transmissions are recorded in their entirety before they can be played back.

### Voice Record Operation affected on the LM-600Analog Rev 2

#### Record and Play

- If Record and Play is enabled, the LM-600Analog Rev 2 will operate without any change to normal operation.
- If Record and Play is not enabled, Delay Message Playback and Repeat Message Playback will operate as described below.

#### Delay Message Playback (with Record and Play not enabled)

- If set for any value other than 0 seconds, a received transmission is recorded in its entirety before it is played back. Normally, if Record and Play is not enabled, playback begins after the programmed Delay Message Playback time.
- If set for a value that is greater than the received transmission, the message is recorded in its entirety and playback begins after the programmed Delay Message Playback time. This is consistent with normal operation.

#### Repeat Message Playback (with Record and Play not enabled)

- If set for any value other than 0 times, a received transmission is recorded in its entirety before playback begins. Normally, if Record and Play is not enabled, playback begins after the programmed Delay Message Playback time.

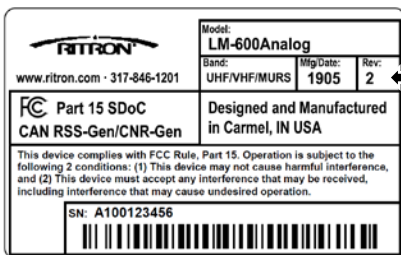
#### For incoming messages to be played live, in real time:

- Delay Message Playback is set to 0 seconds, Repeat Message Playback is set to 0 Times, and Record and Play is not enabled.

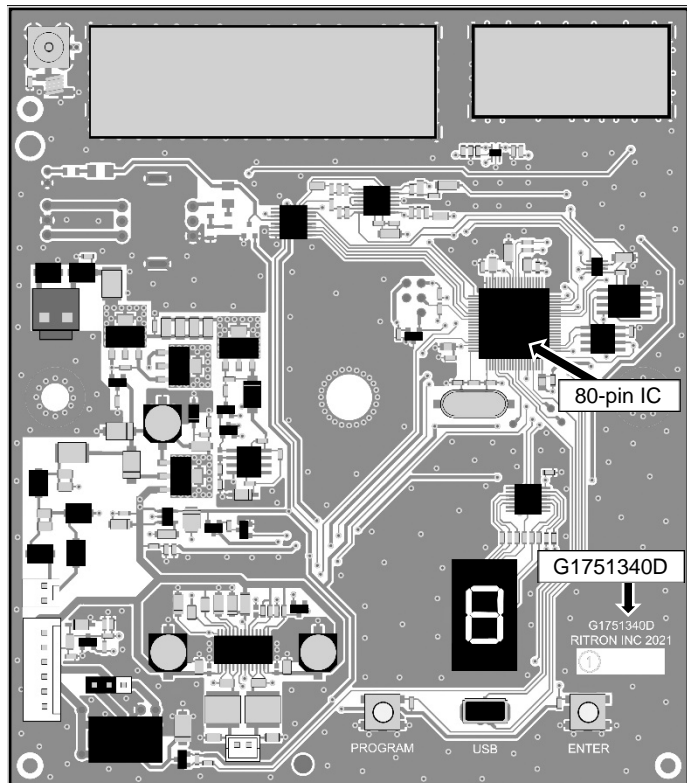
### How to Identify the LM-600Analog Rev 2

The LM-600Analog Rev 2 is easily identified by:

- The serial label located on the back of the radio case
- The large 80-pin microcontroller on the radio PC board
- The PC board revision G1751340D printed on the PC board



← Rev 2 identification



### PC Programmer Requirements

LM-600Analog Rev 2 Firmware revision: 46.50

PC Programmer revision: LM-PCPS ver. 1.0.4 or higher