

# COMPANY SAFETY MEETING

## TRAFFIC CONTROL AND PROTECTING WORKERS

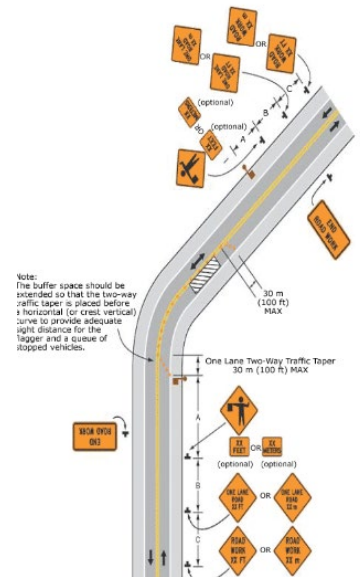
### Traffic Control and Protecting Workers: Ensuring Safety on the Job

Proper traffic control is essential for maintaining safety in construction and road maintenance projects. It not only helps manage the flow of traffic but also protects workers from potential hazards. Effective traffic control measures begin with thorough planning and design, including the development of comprehensive Traffic Control Plans (TCPs). These plans should detail the placement of signs, barriers, and other control devices tailored to the specific project and compliant with local regulations. A thorough site assessment helps identify potential hazards and determine the most effective traffic control measures.

Proper signage is crucial for alerting drivers and guiding them through or around work zones. Warning signs placed well in advance inform drivers about upcoming work zones, while regulatory signs indicate speed limits, lane changes, and other necessary actions. Guide signs help direct traffic safely through or around the work zones. Additionally, barriers and channelizing devices such as cones, drums, and barricades are essential for clearly delineating work zones and protecting workers and equipment from traffic. Temporary barriers like water-filled or concrete barriers can provide additional protection.

Flagging operations, conducted by certified flaggers trained in proper signaling techniques, are vital for controlling traffic flow. Training for flaggers is a critical component in ensuring the safety of both workers and motorists. Flaggers play a crucial role in managing traffic flow around work zones, and their actions can significantly impact overall site safety. According to the Federal Highway Administration (FHWA) and the Occupational Safety and Health Administration (OSHA), flaggers must be adequately trained and certified to perform their duties effectively. **Flaggers must complete a certification program** approved by state or federal agencies. These programs typically include classroom instruction and practical exercises, covering topics such as traffic control techniques, communication skills, and safety protocols.

Setting up a clear work zone, free of unnecessary equipment and materials, reduces tripping hazards. Establishing safe entry and exit points for workers and vehicles minimizes accident risks. Comprehensive safety training focused on traffic control procedures and emergency response, coupled with regular safety drills, ensures that workers are well-prepared for any situation. Daily safety briefings discussing the day's activities, potential hazards, and precautions, along with coordination with local law enforcement and emergency services, further enhance safety.



Statistics underscore the importance of these measures. For instance, the Federal Highway Administration reported 891 fatalities and 37,701 injuries in work zone crashes, highlighting the need for effective traffic control. The Bureau of Labor Statistics notes higher injury rates in highway, street, and bridge construction compared to other sectors.

Implementing effective traffic control measures and prioritizing worker safety are critical to preventing accidents and ensuring smooth project execution. By following these strategies, construction and road maintenance teams can protect workers and the public, creating a safer work environment for everyone.

Safety is everyone's responsibility. Staying vigilant and proactive in identifying and mitigating potential hazards in the work zone is crucial. For detailed guidelines, refer to the Manual on Uniform Traffic Control Devices (MUTCD) and OSHA's Work Zone Traffic Safety resources.



**COMPANY SAFETY MEETING  
TRAFFIC CONTROL AND PROTECTING WORKERS**

**SUPERINTENDENT:** \_\_\_\_\_ **FOREMAN:** \_\_\_\_\_

**PROJECT:** \_\_\_\_\_ **WORK AREA:** \_\_\_\_\_ **DATE:** \_\_\_\_\_

**INSTRUCTOR SIGNATURE:** \_\_\_\_\_ **TITLE:** \_\_\_\_\_

Print	Sign
1.	11.
2.	12.
3.	13.
4.	14.
5.	15.
6.	16.
7.	17.
8.	18.
9.	19.
10.	20.

**JOB HAZARD ANALYSIS (JHA)**

MAJOR TASKS TO COMPLETE	HAZARDS INVOLVED	CONTROL MEASURES

**ADDITIONAL TOPICS OF DISCUSSION**

---



---



---



---