

# BELLEVUE TOWN CENTER

2064 Lime Kiln Road Green Bay, WI 54311



MIDLAND ATLANTIC  
PROPERTIES



## PROPERTY OVERVIEW

Bellevue Town Center is a 74,270 square foot Copps grocery and Target anchored shopping center located in Bellevue, a submarket of Green Bay, WI.

## PROPERTY HIGHLIGHTS

- Bellevue Town Center is a 74,270 Square Foot Copps Grocery and Target Anchored Shopping Center Located in Bellevue, WI ( Submarket of Green Bay, WI)
- The Shopping Center Lies Less than 1 Miles North of Highway 172, at the Corner of Lime Kiln Road (19,045 ADT) and Allouez Avenue (9,271 ADT)
- Strong National / Regional Tenant Lineup Which Consists of: Copps Grocery, Target, H&R Block, Sally Beauty, Weight Watchers, etc.
- There are 3 Point of Ingress / Egress, Allowing Abundant Access In and Out of the Center

DEMOGRAPHICS	3 MILE	5 MILES
Total Population	59,764	134,571
Average HH Income	\$97,814	\$93,403
Businesses	1,408	4,312
Employees	19,847	65,371

## TRAFFIC COUNTS

Lime Kiln Road	19,045
Allouez Avenue	9,271

## MIDLAND ATLANTIC PROPERTIES

Cincinnati Office  
8044 Montgomery Rd, Suite 370  
Cincinnati, OH 45236

MIDLANDATLANTIC.COM

## FRANCIS SARKO

Direct: 513.587.6167  
fsarko@midlandatlantic.com

DEVELOPMENT • BROKERAGE • ACQUISITIONS • MANAGEMENT

Information contained herein has been obtained from sources deemed reliable but is not guaranteed and is subject to change without notice.

# BELLEVUE TOWN CENTER

2064 Lime Kiln Road Green Bay, WI 54311



MIDLAND ATLANTIC  
PROPERTIES



PICK 'N SAVE	64,470 SF
PANDA HOUSE	1,400 SF
WORLD NAIL & SPA	1,400 SF
SALLY BEAUTY SUPPLY	1,400 SF
THE OILERIE	1,400 SF
AVAILABLE	1,400 SF
COST CUTTERS	1,400 SF
MATHMASIUM	1,400 SF
TOTAL GLA	74,270 SF

# BELLEVUE TOWN CENTER

2064 Lime Kiln Road Green Bay, WI 54311



MIDLAND ATLANTIC  
PROPERTIES

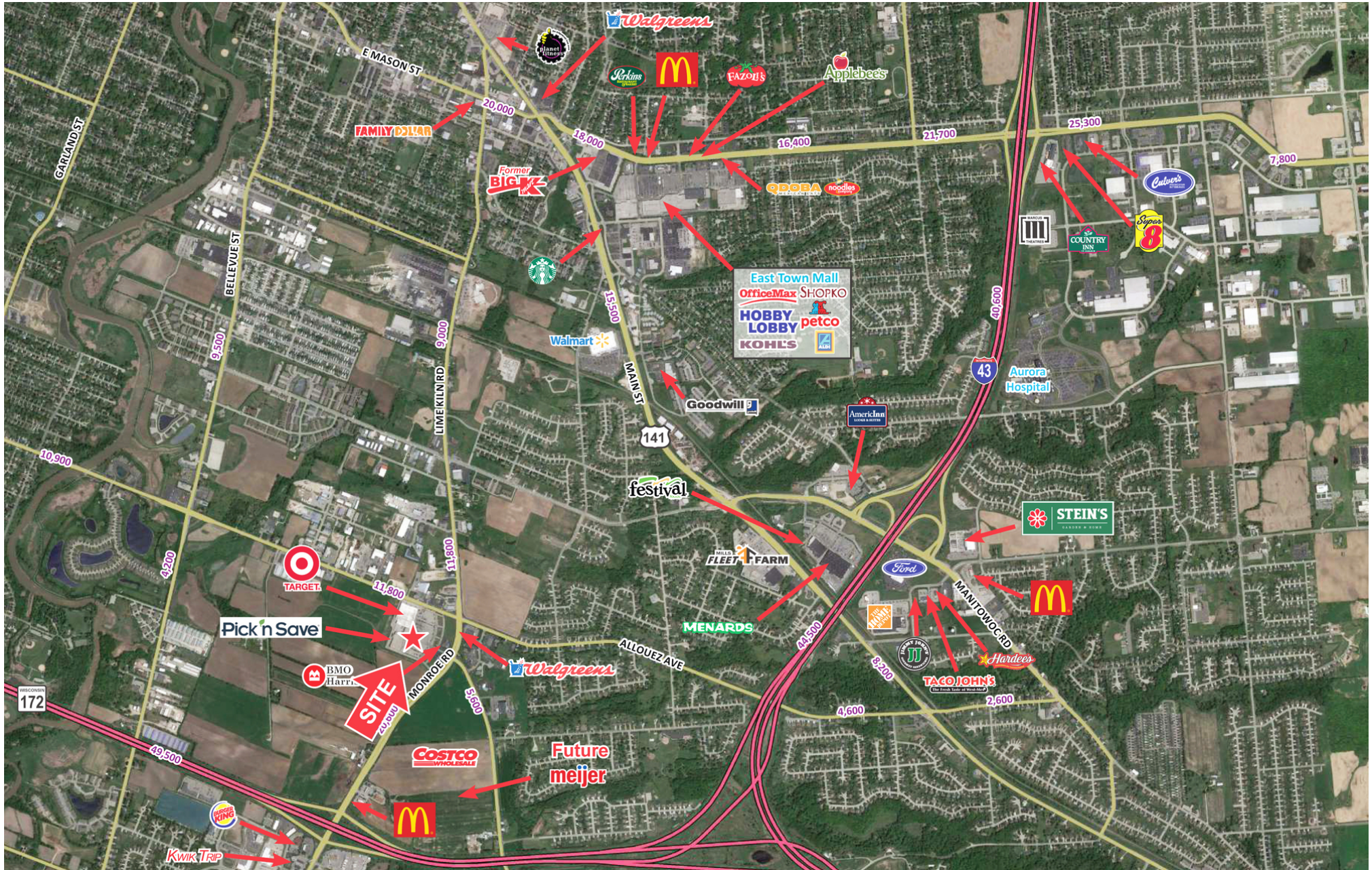


# BELLEVUE TOWN CENTER

2064 Lime Kiln Road Green Bay, WI 54311



MIDLAND ATLANTIC  
PROPERTIES

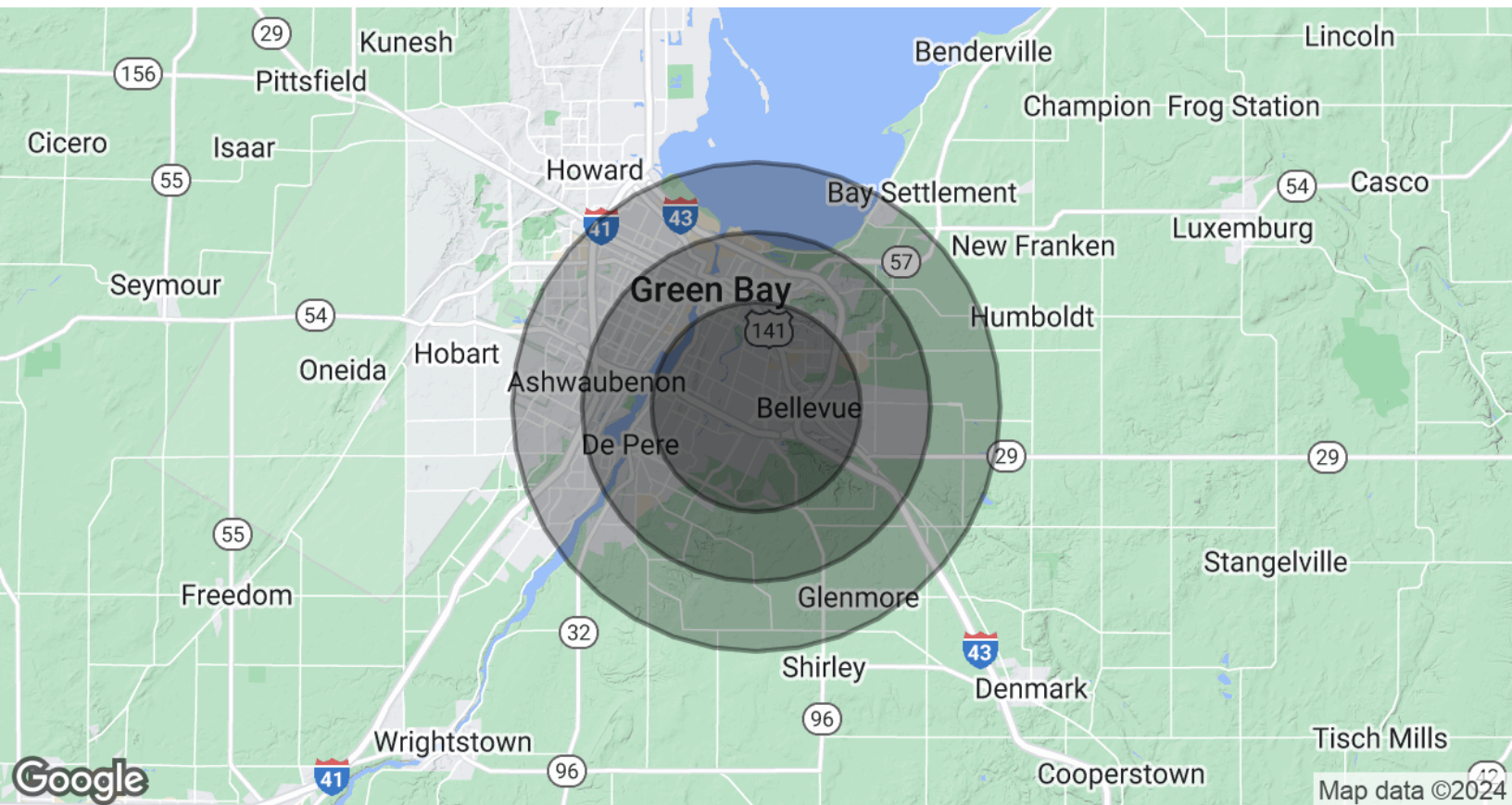


# BELLEVUE TOWN CENTER

2064 Lime Kiln Road Green Bay, WI 54311



MIDLAND ATLANTIC  
PROPERTIES



## POPULATION & HOUSING

	3 MILES	5 MILES	7 MILES
Total Population	59,764	134,571	188,803
Projected Annual Growth (2023-2028)	0.3%	0.4%	0.4%
Total Households	24,603	55,271	78,429
Median Home Value	\$225,226	\$216,081	\$219,674

## INCOME & BUSINESS

	3 MILES	5 MILES	7 MILES
Average HH income	\$97,814	\$93,403	\$94,629
Daytime Population (16+ years)	37,264	104,658	146,697
Total Businesses	1,408	4,312	6,029
Total Employees	19,847	65,371	91,960

### MIDLAND ATLANTIC PROPERTIES

Cincinnati Office  
8044 Montgomery Rd, Suite 370  
Cincinnati, OH 45236

### FRANCIS SARKO

Direct: 513.587.6167  
fsarko@midlandatlantic.com

MIDLANDATLANTIC.COM

DEVELOPMENT • BROKERAGE • ACQUISITIONS • MANAGEMENT

Information contained herein has been obtained from sources deemed reliable but is not guaranteed and is subject to change without notice.