

VictoriaSeries

RecycleDesign™

Victoria blends easily into a broad range of environments from residential communities to urban settings where permanent materials and ageless design have shaped the quality and feel of place. Traditional form and attention to fine details define the classic timeless character of Victoria's recycled aluminum castings and overall design.





Seats are available in 48", 60", 72", and 96" lengths. Joined seats (96" and above) will have an arm integral to the center support. Additional center arms can be added to vary individual seat spacing increments. Custom lengths are available.

Victoria Seat

- Available only with arms
- Independent center arms available
- Discontinuous seat and back surface
- Proportioned for sitting comfort
- Rounded seat/back edges protect users
- Surface mount only
- Seats link end to end



Benches are available in standard lengths of 48", 60", 72", and 96". Joined benches (96" and above) will have a center support. Sleep stoppers are available. Benches and seats are surface mount.

Victoria Bench

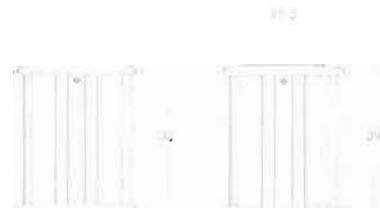
- Continuous seating surface
- Proportioned height for sitting comfort
- Rounded edges protect users legs
- Surface mount only
- Benches link end to end
- Available with sleep stoppers



Trash receptacles are front loading. The access door has a key lock and provides ease of access and maintenance by service personnel.

Victoria Waste Receptacle

- Front loading for easy trash retrieval
- Locking door controls access
- Available with flat or dome cover
- Dome cover has two side entry openings
- Requires 32 gallon plastic liner
- Surface mount only



Victoria Picnic Table

- Embedded/surface mount table option
- Victoria bench used as seat
- Teardrop seat/table edges protect users
- Custom sizes available
- ADA configuration available



Distributed by

RecycleDesign™ is a registered trademark for site amenities manufactured and marketed worldwide. TRIMAX™ HDPE is a proprietary branded compound used exclusively for the extruded planks used in RecycleDesign™ products.

TRIMAX™ Planks are made of recycled, high density polyethylene lumber. The product is composed of 100% recycled HDPE derived from purified milk bottle waste, combined with UV-inhibited pigment systems as well as other process additives. TRIMAX™ HDPE lumber is made from a single, purified polymer and is manufactured to consistent, reproducible standards.

TRIMAX™ HDPE is very resistant to moisture and is warranted not to rot, splinter, crack or peel. Waterproofing or staining is neither required nor recommended.

Powdercoat product finishing systems used with RecycleDesign™ products are 100% solids and contain no volatile organic compounds. The Powdercoat resin system is polyester, a weatherable and durable material suited for exterior use.

Powder Colors

- Black
- Brown
- Charcoal
- Green
- Red

Trimax™ Colors

- Cedar
- Gray
- Weathered
- Turf Green

Printed colors will vary from actual materials. Color samples are available upon request.

InfinitySeries

RecycleDesign™

Infinity's architectural aesthetic is a natural style choice for the urban environment. Through quality manufacturing and design integrity, Infinity yields both the performance and appearance to meet the needs of municipalities and park districts when planning public spaces. Designed as a system, Infinity provides multiple configurations and installation options.





Seats and benches are available in standard lengths of 48", 60", 72", and 96". Joined benches have a center support. Joined seats have a center arm integral to the center support. Custom lengths are available.

Infinity Seat

- Available only with arms
- Continuous seat and back surface
- Proportioned for sitting comfort
- Waterfall edges protect users
- Alternate base designs
- All aluminum structural components
- Seats can be linked end to end



Specify base type when selecting Infinity Seats and Benches. Choose X-Base surface mount, Y-Base surface or embedded mount. Aggregate columns or other custom mountings are available as special order.

Infinity Bench

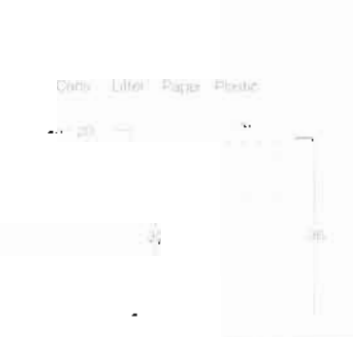
- Continuous seat surface
- Proportioned height for sitting comfort
- Waterfall edges protect users
- Alternate base designs available
- All aluminum structural components
- Seats can be linked end to end
- Available with sleep stoppers



Trash bins are available in two sizes with domed or flat cover or fully open top. Domed covers have HDPE insert discs that shape the trash opening for sorting recycled materials. Cast aluminum structural parts reflect line details.

Infinity Recycling Bin

- HDPE inserts customize opening
- Cast cover with keylock
- Plastic liner is required
- Surface mount, casters or glides
- 33 and 40 gallon capacity - top fill only
- Recycling clusters available
- 16" deep planter/caster or glides available
- Planter uses same bin frames and slats
- Open top, requires pot or liner



Infinity Plaza Table *New! (Available 2008)*

- Surface or embedded mount
- Table top slats are 2.5x3.5 HDPE profiles
- Waterfall seat edges protect users
- Steel structural components
- Standard size is 38" square
- Custom sizes available
- Optional ADA version (3 seats)

Distributed by

RecycleDesign™ is a registered trademark for site amenities manufactured and marketed worldwide. TRIMAX™ HDPE is a proprietary branded compound used exclusively for the extruded planks used in RecycleDesign™ products.

TRIMAX™ Planks are made of recycled, high density polyethylene lumber. The product is composed of 100% recycled HDPE, derived from purified milk bottle waste, combined with UV-inhibited pigment systems as well as other process additives. TRIMAX™ HDPE lumber is made from a single, purified polymer and is manufactured to consistent, reproducible standards.

TRIMAX™ HDPE is very resistant to moisture and is warranted not to rot, splinter, crack or peel. Waterproofing or staining is neither required nor recommended.

Powdercoat product finishing systems used with RecycleDesign™ products are 100% solids and contain no volatile organic compounds. The Powdercoat resin system is polyester, a weatherable and durable material suited for exterior use.

Powder Colors

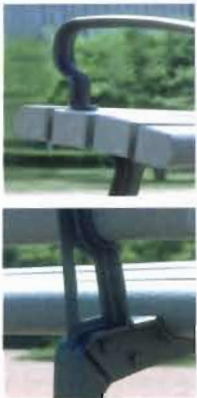


Trimax™ Colors



Printed colors will vary from actual materials. Color samples are available upon request.

From parks and plazas to sidewalks and promenades, City reflects both the lightness and the solidity of the urban landscape. Iron casting forms, derived from the glass and steel structures of the city, create profiles that are stout yet stately. City blends the qualities of products designed for people in an urban context.





City Seat

- Available with or without arms
- Arms independent of support structures
- Surface mount only
- Discontinuous seat and back surfaces
- Proportioned for sitting comfort
- Bull nose edge slats protect users
- 60", 72" and 96" standard lengths



City Bench *New! (Available 2009)*

- Continuous seat surface
- Proportioned height for sitting comfort
- Waterfall edges to protect users
- Surface mount only
- 60" and 96" standard lengths
- Custom lengths available
- Available with sleep stoppers



Plaza Bench

- Surface mount or freestanding
- Seat and back use same HDPE profiles
- Cast aluminum end frames
- 60" standard length
- Custom sizes available
- Can connect as tandem unit



Recycling Bin *New!*

- 33 gallon size with 2 side fill openings
- Cast cover with keylock
- 33 gallon plastic liner required
- Surface mount, casters or glides
- Top unloading only
- Recycling clusters available



Plaza Table *New!*

- Surface or embedded mount
- Table top slats are 2.5x3.5 HDPE profiles
- Seats use 2.5x3.5 bullnose profile
- Bullnose seat edges protect users
- Steel structural components
- Custom sizes available
- ADA version available (3 seats only)

Distributed by

RecycleDesign™ is a registered trademark for site amenities manufactured and marketed worldwide. TRIMAX™ HDPE is a proprietary branded compound used exclusively for the extruded planks used in RecycleDesign™ products.

TRIMAX™ Planks are made of recycled, high density polyethylene lumber. The product is composed of 100% recycled HDPE, derived from purified milk bottle waste, combined with UV-inhibited pigment systems as well as other process additives. TRIMAX™ HDPE lumber is made from a single, purified polymer and is manufactured to consistent, reproducible standards.

TRIMAX™ HDPE is very resistant to moisture and is warranted not to rot, splinter, crack or peel. Waterproofing or staining is neither required nor recommended.

Powdercoat product finishing systems used with RecycleDesign™ products are 100% solids and contain no volatile organic compounds. The powdercoat resin system is polyester, a weatherable and durable material suited for exterior use.

Powder Colors



Trimax™ Colors



Printed colors will vary from actual materials. Color samples are available upon request.

BalanceSeries

RecycleDesign™

Balance derives its unique appearance from strong elevation profiles. Contrasting forms highlight the beauty of line and the power of mass to create elegant structures that exist easily in either city or park settings.





Balance Seat

- Available in armless only
- Discontinuous seat and back surfaces
- Proportioned for sitting comfort
- Rounded edges protect users
- Seat slats pre-drilled for attachment
- Surface or subsurface mount
- Custom lengths available



Balance Bench

- Continuous, flat bench surface
- Slats attach to castings from underside
- Proportioned height for sitting comfort
- Surface mount only
- Custom lengths available



Balance Trash Bin

- HDPE slat walls enclose plastic liner
- Open top for ease of access
- Surface mount only
- Assembly rings rotational molded HDPE
- 40 gallon capacity
- Recycling clusters available as specials



Balance Plaza Table

- Surface or embedded mount
- Table top slats are 2.5x3.5 HDPE profiles
- Rounded seat edges protect users
- Steel structural components
- Standard size is 38" square
- Custom sizes available
- ADA version available (3 seats)

Distributed by

RecycleDesign™ is a registered trademark for site amenities manufactured and marketed worldwide. TRIMAX™ HDPE is a proprietary branded compound used exclusively for the extruded planks used in RecycleDesign™ products.

TRIMAX™ Planks are made of recycled, high density polyethylene lumber. The product is composed of 100% recycled HDPE, derived from purified milk bottle waste, combined with UV-inhibited pigment systems as well as other process additives. TRIMAX™ HDPE lumber is made from a single, purified polymer and is manufactured to consistent, reproducible standards.

TRIMAX™ HDPE is very resistant to moisture and is warranted not to rot, splinter, crack or peel. Waterproofing or staining is neither required nor recommended.

Powdercoat product finishing systems used with RecycleDesign™ products are 100% solids and contain no volatile organic compounds. The Powdercoat finish system is polyester, a weatherable and durable material suited for exterior use.

Powder Colors



Trimax™ Colors



Printed colors will vary from actual materials. Color samples are available upon request.

ParkSeries

RecycleDesign™

Park is designed as a cost effective solution for park and recreation applications. Simple, strong fabricated steel structures combine style and durability to create a range of products that both satisfy the service needs of the caretaker and provide comfort and pleasure for the park user.





Park Seats

- Available with arms or armless
- Discontinuous seat and back surface
- Rounded edges provide user comfort
- Contour seat has round column
- Teardrop seat has I-Beam column
- Installation surface mount or embedded
- Variable center arm increments



Park Benches

- Continuous seat surface
- Proportioned height for sitting comfort
- Rounded edges protect users
- Contour/flat benches have round column
- Teardrop bench has I-Beam column
- Install surface mount or embedded
- Available with sleep stoppers



Park Trash Bin

- HDPE slat walls enclose plastic liner
- Open top for ease of access
- Surface or embedded mount
- Available in 20, 32, 55 gallon sizes
- Plastic liner available for 32 gallon only
- Recycling clusters available



Park Picnic Table

- Embedded or surface mount
- Rounded seat / top edges protect users
- Custom sizes available
- ADA configuration available



Park Portable Picnic Table

- Freestanding or surface mount
- Rounded seat / top edges protect users
- Custom sizes available
- ADA versions available

Distributed by

RecycleDesign™ is a registered trademark for site amenities manufactured and marketed worldwide. TRIMAX™ HDPE is a proprietary branded compound used exclusively for the extruded planks used in RecycleDesign™ products.

TRIMAX™ Planks are made of recycled, high density polyethylene lumber. The product is composed of 100% recycled HDPE, derived from purified milk bottle waste, combined with UV-inhibited pigment systems as well as other process additives. TRIMAX™ HDPE lumber is made from a single, purified polymer and is manufactured to consistent, reproducible standards.

TRIMAX™ HDPE is very resistant to moisture and is warranted not to rot, splinter, crack or peel. Waterproofing or staining is neither required nor recommended.

Powdercoat product finishing systems used with RecycleDesign™ products are 100% solids and contain no volatile organic compounds. The Powdercoat resin system is polyester, a weatherable and durable material suited for exterior use.

Powder Colors



Trimax™ Colors



Printed colors will vary from actual materials. Color samples are available upon request.



Ordering Information

Terms of Sale

General Information

RecycleDesign™ Product Portfolio:

- VictoriaSeries
- InfinitySeries
- CitySeries
- BalanceSeries
- ParkSeries

Ordering Information:

The dated price list shows current ordering and pricing information. More specific information about product lines is available in RecycleDesign™ Series brochures and at www.RecycleDesign.com.

Product lines are organized by Series. Each Series has a specific design character and varies in size and detail as well as product scope, to provide style, installation and cost selection.

When specifying an order, please refer to the latest price list for product codes and pricing. Specify complete information for each product ordered including:

- Series Name
- Product Name
- Product Catalog Number
- Product Dimension
- TRIMAX™ Color
- Powdercoat Color & Finish
- Installation Method
- Other Key Information

Custom Applications: Some RecycleDesign™ products are available in custom sizes and can often be adapted for custom installations. For example, the InfinitySeries Bench can be cantilever mounted to a wall. Please contact a RecycleDesign™ technical sales representative to inquire about special requirements. A drawing will be required to better understand situation and intent. RecycleDesign™ staff will evaluate feasibility, timing, and cost.

Prices:

All prices are F.O.B. factory quoted in US Dollars; title to all goods passes to the customer at the time of shipment from a RecycleDesign™ plant.

Terms: Net 30 days with approval.

A 2% discount is applied for cash payments at acceptance of order. A signed purchase order or order letter is required. No verbal orders will be accepted.

Freight: Freight charges are typically on a collect basis.

Freight Damage: The customer is responsible for recovery of their loss if the shipment is damaged in transit. Because the carrier is an agent of the customer, RecycleDesign™ is not responsible for loss or damage in transit.

Freight Claims: Claims for damage must be filed by the customer/consignee against the carrier. Call for inspection immediately and do not unpack merchandise completely until inspected by carrier.

Taxes: Taxes will be added to the invoice except when tax exempt certificate accompanies order.

Returns: Merchandise may not be returned without proper authorization. Returns are subject to a 30% to 100% restocking charge. Special orders may not be returned under any circumstance.

Cancellations: Cancellation charges can range from 50% to 100%, depending on the stage of order completion. Special orders may not be cancelled.

Miscellaneous:

Approximate shipping weights are in pounds and include unit and packaging material weights.

Hardware for surface or subsurface mount anchoring is not included.

All product and material specifications are subject to change without notice.

Special design modifications are available. Please submit ideas for quotation.

Prices are subject to change without notice.

Warranty: RecycleDesign™ warrants its' products to be free from defects in material and/or workmanship for a period of one year from the date of invoice. This warranty does not apply to damage resulting from accident, alteration, misuse, tampering, negligence, or abuse. RecycleDesign™ will, at its option, repair, replace, or refund the purchase price of any items found defective upon inspection by an authorized RecycleDesign™ service representative.

Technical Services:

Call RecycleDesign, LLC: 765.374.0316 between 8:00 a.m. and 5:00 p.m. EST. RecycleDesign™ technical, specification and application information is available by calling:

TEL: 765.374.0316
FAX: 312.643-3275

Documents can be faxed 24/7

Web Site:

www.RecycleDesign.com
For information on product offerings, installation methods, technical specifications, drawings and product catalogs and other information which can be downloaded.

The RecycleDesign™ brand was developed by the Fahmstrom/White Design Partnership. Products have been added over time and the open-ended portfolio now consists of five "series", each with a different appearance, performance and price point. Our intent is to demonstrate how superior quality HDPE profiles can be integrated with custom styled, aluminum and iron castings as well as fabricated steel and stainless steel components to develop well designed products for the site furnishings market. Our experience has shown that thoughtful designs, carefully crafted with quality intent and design value added are well appreciated by the A&D community. RecycleDesign™ products reinforce the value of using recycled plastics in product applications. Intelligent detailing provides appropriate structure while integrating dissimilar materials with high coefficients of expansion. Numerous design awards and international recognition confirm the value and acceptance of products designed both for appearance and performance.

Dale Fahmstrom



Technical Specifications

General Installation Guidelines

RecycleDesign™ products are shipped KD to reduce shipping and packaging costs. Please unpack and inspect components to ensure that parts are complete and undamaged upon arrival. The following technical notes are intended to assist in specifying and installing our products; generally accepted A.I.A. principles and local conditions apply accordingly.

Shipping and Packaging Materials

RecycleDesign uses plastic foam packaging materials to protect parts in shipment. We re-use foam accumulated in our recycling operation when it is available; otherwise we use new foam. If you choose to mail the packing foam back to us, we will use it again to pack parts.

TRIMAX™

Lumber slats are made of TRIMAX™ recycled, high density polyethylene. The product is composed of 100% recycled HDPE, derived from purified milk bottle waste, combined with UV-inhibited pigment systems as well as other process additives.

TRIMAX™ is very resistant to corrosion and moisture, and is warranted not to rot, splinter, crack or peel. No waterproofing or staining is required or recommended. The lumber is made from a single, purified polymer and is manufactured to consistent, reproducible standards.

TRIMAX™ Technical Data

Mechanical Properties	Test Method	Typical Value
Density, lbs/cu.in.(ASTM D792)		.025 -.028
Compressive Strength (ASTM D695)		
psi @ .2 in. def.		2540 - 2560
psi @ .4 in. def.		3040 - 3120
psi @ .6 in. def.		5130 - 5350
Tensile Strength, psi(ASTM D638)		2160 - 2630
Flexural Modulus, psi(ASTM D790)		97900 - 103300
Coeff. Of Thermal Exp. in/in/° F (ASTM D696)		.00007
Accel. Weath. >1MM langleys(ASTM E838)		0.91% color Δ

Structural Beams

InfinitySeries, VictoriaSeries and some CitySeries benches and seats utilize 2.500" OD or 2.0"ODx .125" aluminum tube for the support structure spanning the two cast aluminum end frames. The tubes, made from 6061-T6 mill finish material, support three and four point loading on the 5' 0" and 6' 0" models, respectively. Expected bending stresses at both spans are far exceeded by the 17,000 psi recommendation for these beam sizes.

Aluminum Castings

The cast aluminum end frames and spanners are made with #319 alloy, consisting primarily of reprocessed metal. These parts are inherently weather resistant, and possess exceptional strength.

Castings Technical Data

Mechanical Properties	Typical Value
Ultimate Strength, psi	27,000
Yield Strength, psi	18,000
Shear Modulus Rupture, psi	22,000
Fatigue Strength, psi	10,000

Powdercoat Finishes

The finishing systems used with RecycleDesign™ products are 100% solids and contain no volatile organic compounds. The powdercoat resin system is polyester, a weatherable and durable material suited for exterior use.

Mechanical Fasteners

Standard mechanical supplies are typically a combination of vandal resistant and conventional stainless steel fasteners. Tools for custom head fasteners are supplied as necessary. Some aluminum parts are fastened with or to steel parts. This condition may promote electrolysis and degradation of the metal if not insulated. Therefore, nylon insulating washers are supplied with the assembly. Please make sure washers are installed.

Other Considerations

Specific assembly and installation parameters are available, along with mechanical drawings, for each RecycleDesign™ product. Custom lengths and planning options may be available in most RecycleDesign™ furnishings.

Customer information

Toll Free Number:	866.272.8775
RecycleDesign,LLC:	765.374.0316
Prints sent by fax:	765.643.3275

Website

www.RecycleDesign.com

Visit our website for information on product offerings, installation methods, technical specifications, drawings and product catalogs and other information which can be downloaded.



2008 Price List

Prices are subject to change without notice. Confirm all prices at the time of order.

Effective January 1, 2008

Number	Product	Description/Version	Weight	List Price	
Victoria Bench					
9869	NEW	Victoria Bench 48"	Surface Mount	070	651
9870		Victoria Bench 60"	Surface Mount	076	748
9871		Victoria Bench 72"	Surface Mount	084	725
9872	NEW	Victoria Bench 96"	Surface Mount	139	994



Benches 96" and longer will have a center support.

Victoria Seat					
9874	NEW	Victoria Seat 48"	Surface Mount	096	892
9875		Victoria Seat 60"	Surface Mount	102	957
9876		Victoria Seat 72"	Surface Mount	115	1,011
9877	NEW	Victoria Seat 96"	Surface Mount	175	1,388
9879		Victoria Center Arm	Each Individual Arm	006	143

Seats 96" and longer will have a center support and center arm. Each additional arm is \$143.00

Victoria Waste Receptacle					
9873		Victoria Bin/32 Gal	Dome Top/ Surface	118	1,198
			Flat Top/ Surface	112	1,056
9932		Plastic Liner	32 Gal Capacity	010	62



Requires 32G plastic liner. Product must be surface mounted.

Victoria Picnic Table					
9878		Victoria Picnic Table 72"	Surface Mount (Includes 2 - 72" Benches)	330	2,708
9880		ADA Victoria Picnic Table 84"	Surface Mount (Includes 2 - 60" Benches)	330	2,708



Picnic table uses standard benches. Aluminum castings are combined with steel structural supports for the table.

Victoria Plaza Table					
9896	NEW	Victoria Plaza Table 38"x38"	Embedded	253	1,324
			Surface Mount	260	1,324
9896	NEW	Victoria Plaza Table 38"x38"	Embedded ADA	232	1,189
			Surface Mount ADA	237	1,189



ADA Table versions are available with three seats.

Number	Product	Description/Version	Weight	List Price	
Infinity Bench					
9800	NEW	Infinity Bench 48"	Y-Base/Surface/Embedded	069	724
			X-Base/Surface	074	750
9801		Infinity Bench 60"	Y-Base/Surface/Embedded	079	795
			X-Base/Surface	084	821
9802		Infinity Bench 72"	Y-Base/Surface/Embedded	089	871
			X-Base/Surface	094	896
9803	NEW	Infinity Bench 96"	Y-Base/Surface/Embedded	128	1,124
			X-Base/Surface	138	1,210

Custom lengths and custom powder colors are available. Specify base style and installation type. Specify Powdercoat and TRIMAX™ colors. Specify seat/bench length. 96" and longer benches require a center support.

Number	Product	Description/Version	Weight	List Price	
Infinity Seat					
9815	NEW	Infinity Seat 48"	Y-Base/Surface/Embedded	089	841
			X-Base/Surface Mount	094	880
9810		Infinity Seat 60"	Y-Base/Surface/Embedded	097	950
			X-Base/Surface Mount	102	989
9811		Infinity Seat 72"	Y-Base/Surface/Embedded	111	1,011
			X-Base/Surface Mount	116	1,093
9814	NEW	Infinity Seat 96"	Y-Base/Surface/Embedded	166	1,342
			X-Base/Surface Mount	173	1,430

Specify base style, installation type, powdercoat, TRIMAX™ colors and seat length. Armless version special order only. Custom lengths are available. 96" and longer seats require a center support.

Number	Product	Description/Version	Weight	List Price	
Infinity Recycle Bin					
9808		Infinity Bin/33 Gal	Casters or Glides	068	734
			Surface Mount	070	734
9809		Infinity Bin/40 Gal	Casters or Glides	076	754
			Surface Mount	078	754
9908		Plastic Liner	33 Gal Capacity	007	60
9909		Plastic Liner	40 Gal Capacity	009	60
9807		Infinity Planter 16"H	Casters or Glides	060	540
			Surface Mount	070	540

Specify plastic liner or reusable nylon mesh bag. Specify top insert opening shape. Planter version is 16" tall.

Number	Product	Description/Version	Weight	List Price	
Infinity Plaza Table					
9897	NEW	Plaza Table 38"x38"	Embedded	237	1,324
			Surface Mount	244	1,324
9897	NEW	Plaza Table 38"x38"	Embedded ADA	215	1,189
			Surface Mount ADA	220	1,189

Specify installation type. Specify Powdercoat and TRIMAX™ colors. ADA table versions are available with three seats.



Number	Product	Description/Version	Weight	List Price
Balance Bench				
9820	Balance Bench 60"	Surface Mount	096	556
9821	Balance Bench 72"	Surface Mount	135	746
9822	Balance Bench 96"	Surface Mount	151	818

Balance Seat				
9825	Balance Seat 60"	Surface Mount	131	1,047
9827	Balance Seat 96"	Surface Mount	195	1,431

Balance Receptacle					
9828	NEW	30 Gal with Liner	Surface Mount	066	394
9828	NEW	Two Bin Cluster	Surface Mount	132	1,077
9828	NEW	Three Bin Cluster	Surface Mount	198	1,426

Balance/City Plaza Table					
9898	NEW	Plaza Table 38" x 38"	Embedded Mount	253	1,324
			Surface Mount	260	1,324
9898	NEW	Plaza ADA - 3 Seats	Embedded Mount	232	1,189
			Surface Mount	237	1,189

City Seat/Arms					
9860		City Seat 60"/Arms	Surface Mount	142	711
9861		City Seat 96"/Arms	Surface Mount	222	979
9862		City Seat 60"/Armless	Surface Mount	127	599
9863		City Seat 96"/Armless	Surface Mount	207	792

City Plaza Seat					
9866	2009	City Plaza Seat 60"	Surface Mount	085	902

City Bench					
9864	(2009)	City Bench 60"	Surface Mount	104	495
9865	(2009)	City Bench 96"	Surface Mount	143	711

City Recycle Bin					
9866	NEW	City Trash Bin 33 Gal	Casters/Glides	081	754
			Surface Mount	082	754
9908		Plastic Liner	33 Gal Capacity	007	60

Number	Product	Description/Version	Weight	List Price
Park Flat /Contour Bench				
9841	Park Bench/Flat 60"	Embedded	78	376
		Surface Mount	82	395
9842	Park Bench/Flat 96"	Embedded	122	537
		Surface Mount	128	567
9843	Park Bench/Contour 60"	Embedded	78	391
		Surface Mount	82	411
9844	Park Bench/Contour 96"	Embedded	122	561
		Surface Mount	128	590
Park Contour Seat				
9845	Contour Seat/Arm 60"	Embedded	123	699
		Surface Mount	131	703
9846	Contour Seat/Arm 96"	Embedded	194	955
		Surface Mount	206	979
9847	Contour Seat/Armless 60"	Embedded	119	622
		Surface Mount	127	640
9848	Contour Seat/Armless 96"	Embedded	190	881
		Surface Mount	200	908
Park Teardrop Seat				
9885	Teardrop Seat/Arm 72"	Embedded	122	922
		Surface Mount	130	943
9887	Teardrop Seat/Armless 72"	Embedded	116	775
		Surface Mount	124	795
Park Teardrop Bench				
9881	Teardrop Bench 72"	Embedded	086	508
		Surface Mount	092	529
Park Waste Receptacle Enclosure				
9855	Waste Enclosure 20 Gal.	Freestanding/Surface	092	453
		Embedded	100	556
9856	Waste Enclosure 32 Gal.	Freestanding/Surface	121	488
		Embedded	129	619
9857	Waste Enclosure 55 Gal.	Freestanding/Surface	155	595
		Embedded	163	698
9932	Plastic Liner 32 Gallon		010	62
Park Picnic Table				
9850	Park Picnic 60"	Embedded	258	1,081
		Surface Mount	270	1,162
9851	Park Picnic 72" ADA	Embedded	296	1,228
		Surface Mount	310	1,297
9852	Park Picnic 96" ADA	Embedded	384	1,424
		Surface Mount	398	1,516
Park Portable Table				
9854	Park Picnic / 72"	Portable	319	1,475
9853	Park Picnic / 84" ADA	Portable	346	1,548

